

Getting Started with EC-Lab[®]: Connection to the instrument(s) & Channel(s) selection

The aim of this presentation is to guide the user to:

- connect the computer to the instrument(s),
- select the channel(s) of the instrument.

1. Switch on the instrument
2. Launch EC-Lab® software
3. Add « new device » in the device list
4. Select the instrument of interest
5. Select the channel(s) of interest
6. Set the appropriate experimental parameters
7. (Disconnection)

NOTE:

It is assumed that the computer and the instruments are physically connected by one of the following means:

- Direct **USB** connection. The latest update of the USB driver has to be correctly installed on the computer,
- Direct **Ethernet** connection with appropriate IP addresses for the instrument(s) and the computer,
- **LAN** connection with the appropriate IP addresses for the instrument(s) and the computer.

More information are available in the installation and configuration manual of the instrument(s).

1- Switch on the instrument

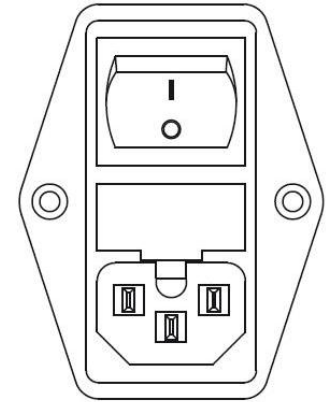
- Turn on the instrument using the switch on the rear panel. Then wait for a few seconds.

TIP:

It is recommended to wait for additional 30 minutes before starting any measurement. During the 30 first minutes, the instrument is warming up.

NOTE:

For some instruments, a red push-stop button is on the front panel. Make sure that this button is not pushed.

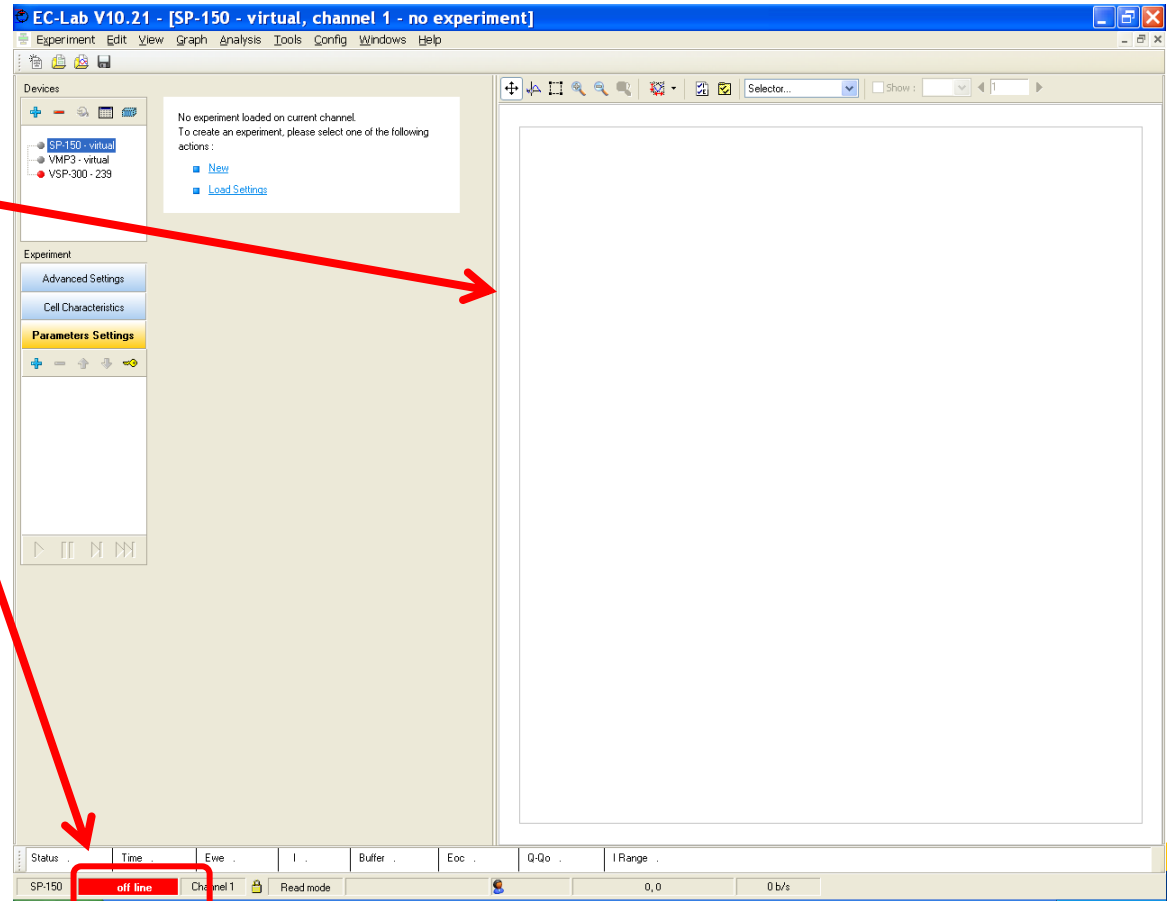


- Click on the EC-Lab[®] icon created on the desktop.



Then, the main window of EC-Lab[®] is displayed.

The window is empty
No instrument is connected.



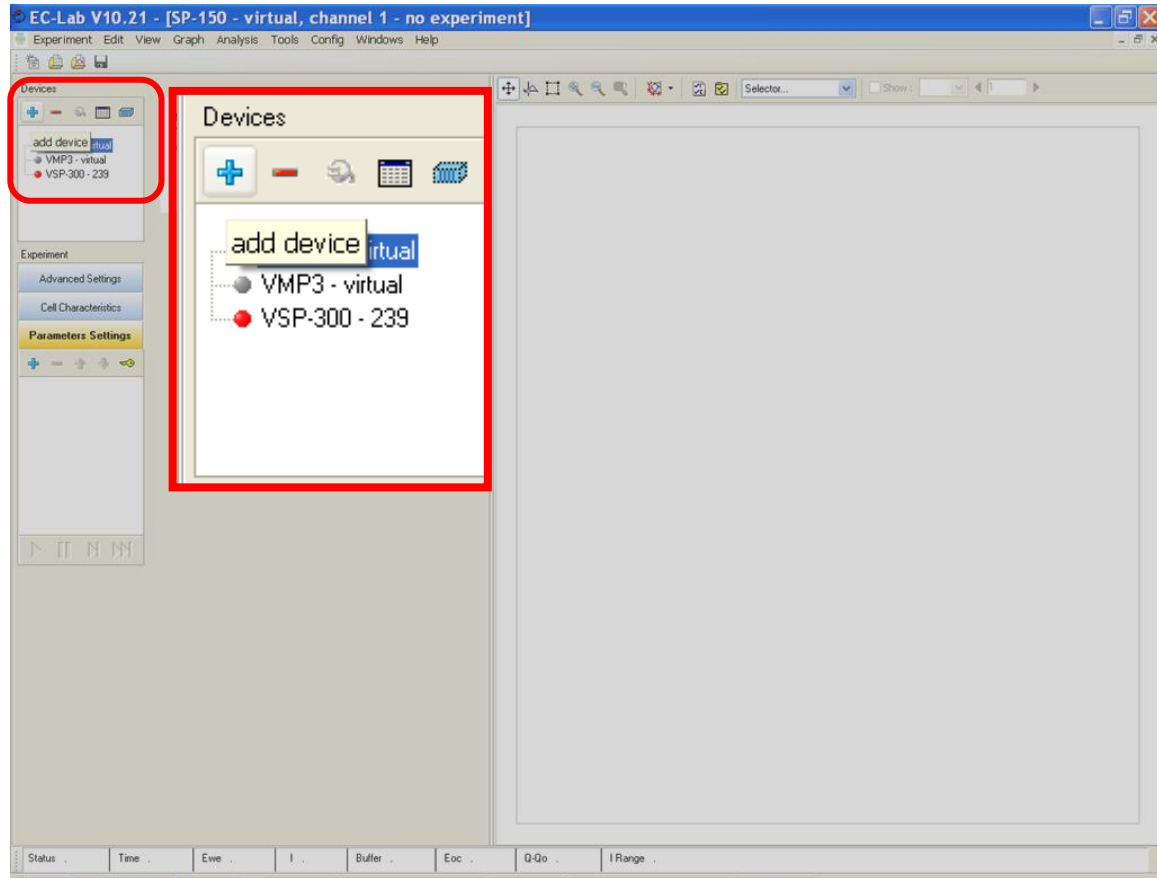
- Click on the “+” button to add a device in the list.

This has to be done only once. The device added will be shown in the list each time EC-Lab® will be opened.

- If the instrument is already in the list, skip next slides. Go to slide #10.

NOTE:

“-” button to remove a device in the list.



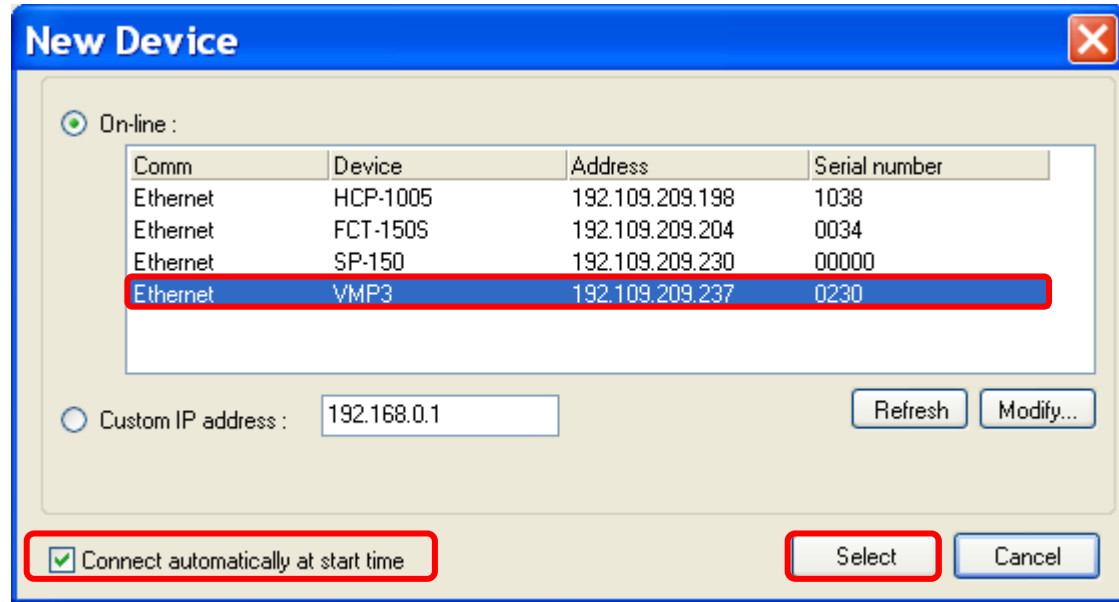
4- Select the instrument(s)

- Select the instrument of interest.
- Click on the « Select » button.

Here: it is VMP3 #0230

NOTE:

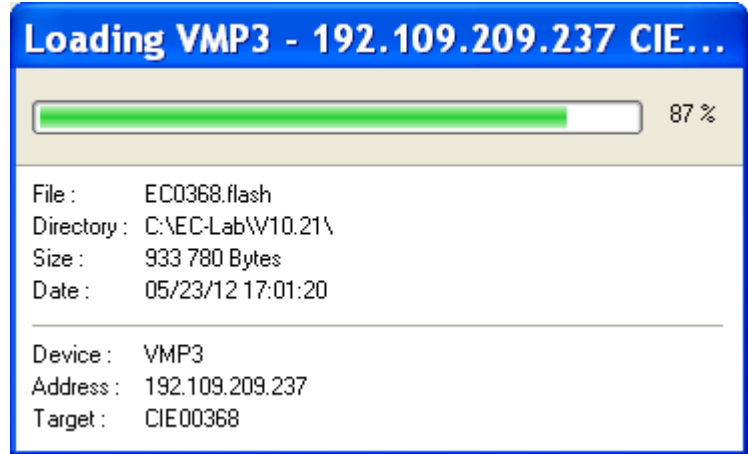
Only one instrument can be selected at a time.



If checked, the next time Ec-Lab is opened, reconnection will be performed automatically

4- Select the instrument(s)

- Two programs are sent to the instrument operating system (*.flash and *.bin files).

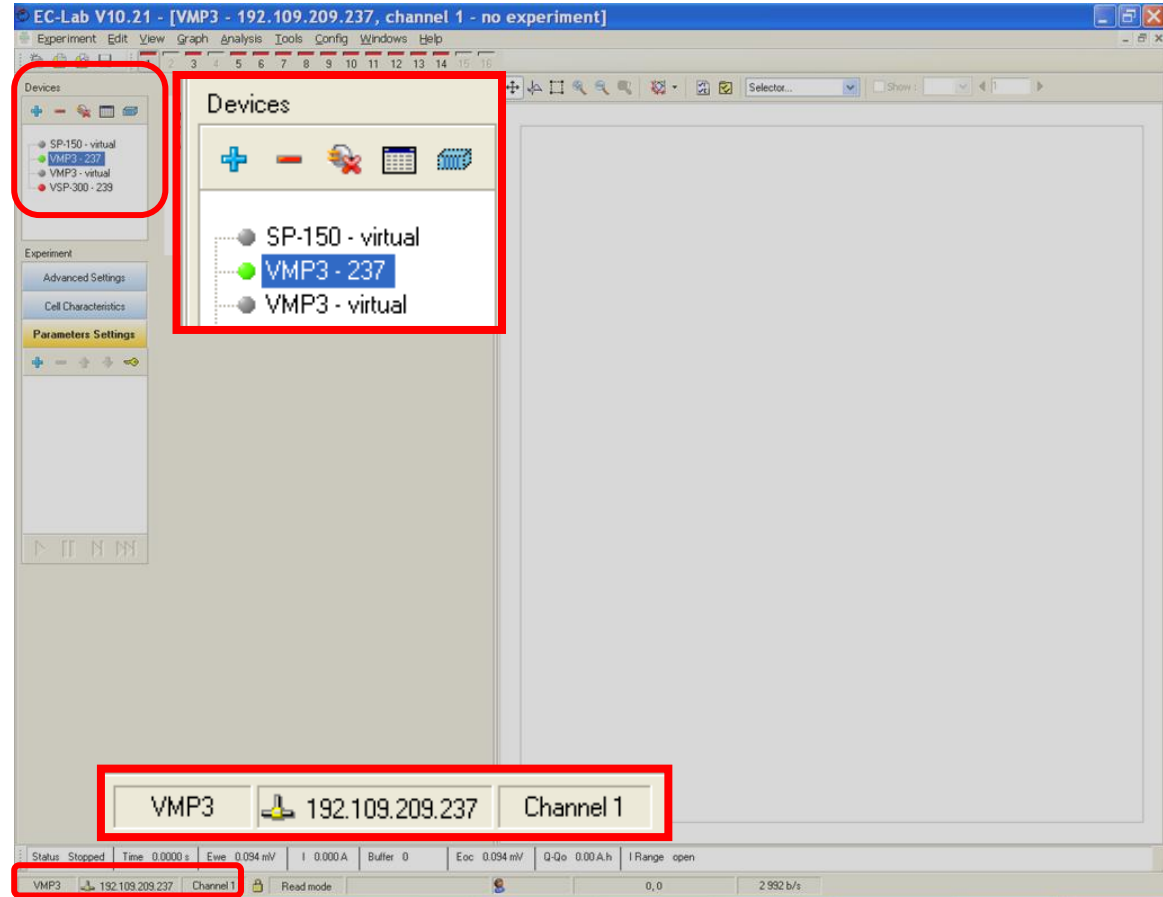


4- Select the instrument(s)

The instrument now appears in the list.


- connected
- not connected
- virtual instrument

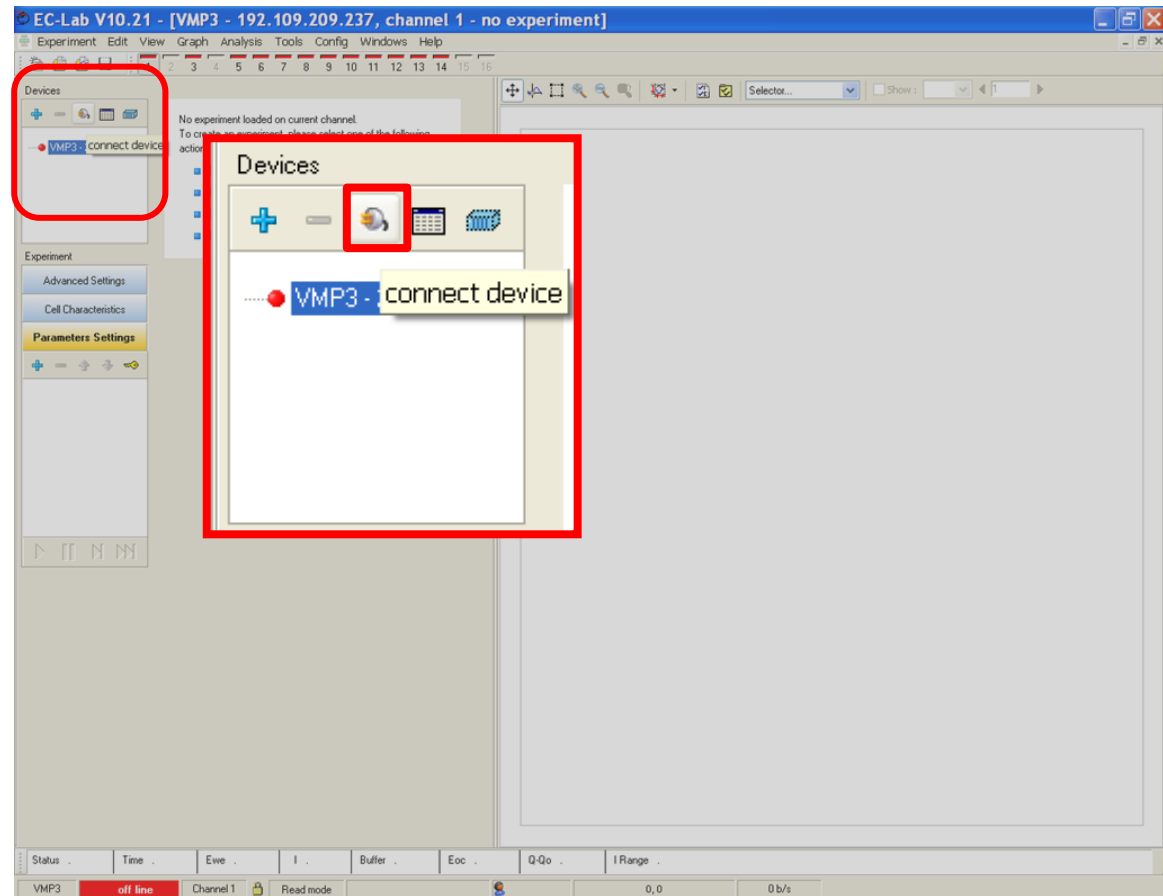
For the Ethernet connection, the IP address is indicated in the list of devices and at the bottom of the window



4- Select the instrument(s)

if the device is already in the list

- Select the instrument (highlighted in blue)
- Click on the connect  button.



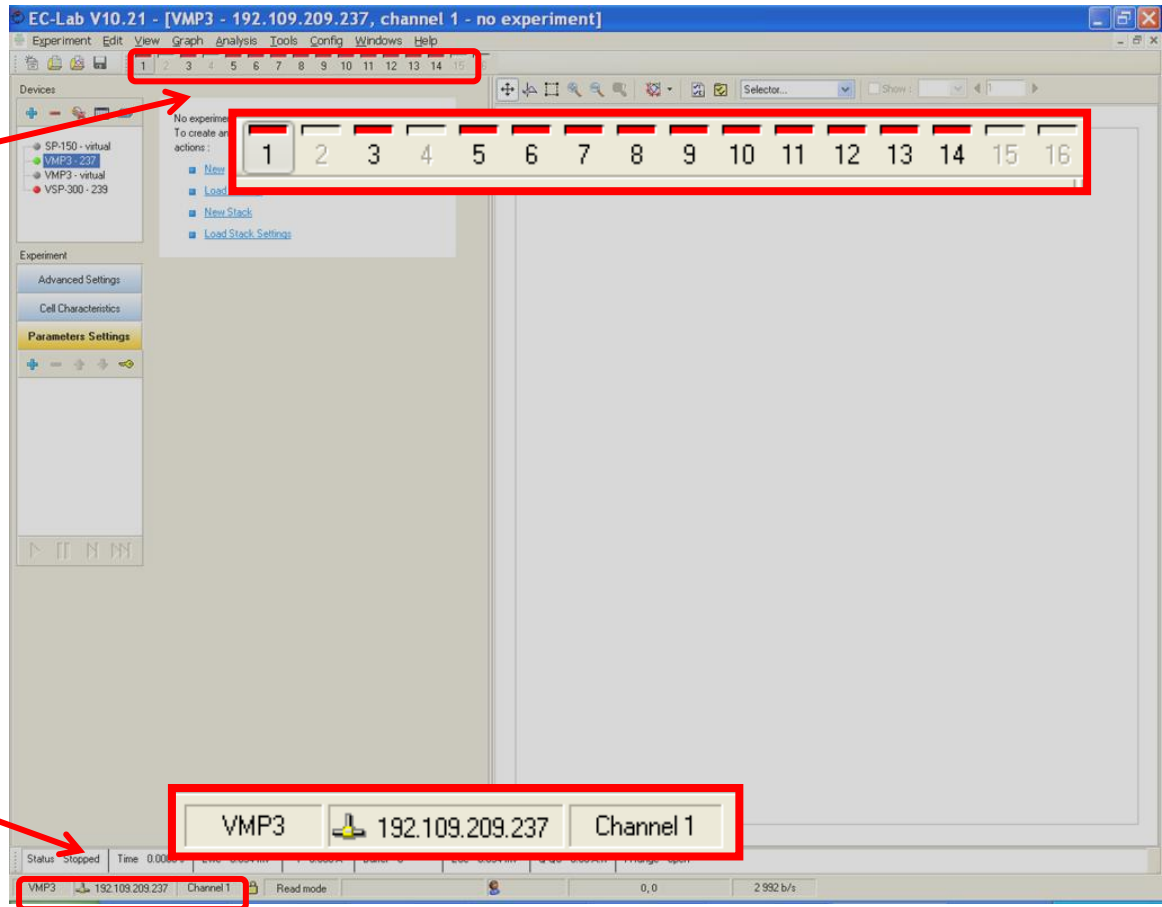
5- Select the channel(s)

There are two ways to select the channel(s) of the instrument.

1. From the main Window
2. From the global view

From the main window:


- Click on the channel in the tool bar.

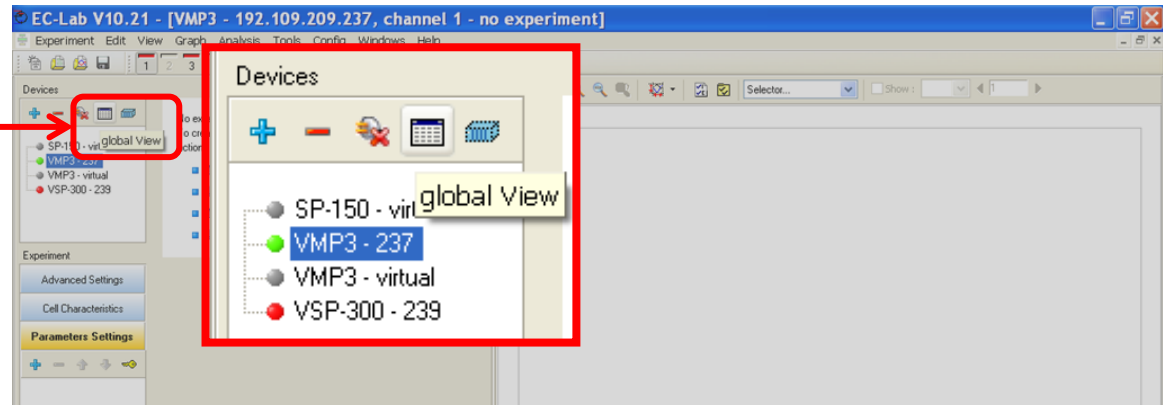


The instrument and the channel numbers are indicated on the bottom of the window

5- Select the channel(s)

From the global view

- Click on the  button.
- In the « global view » window, click on the channel of interest.

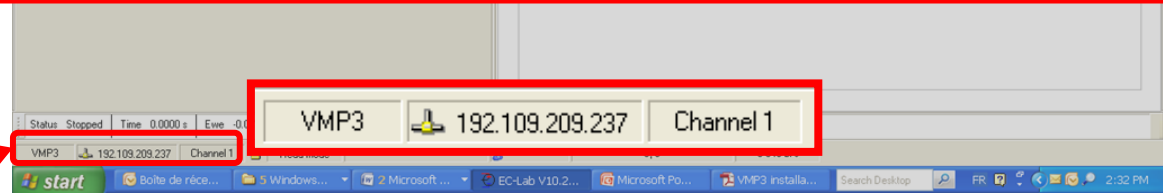


Global View

	1 Z	3 Z	5 Z	6 Z	7 Z	8 Z	9 Z	10Z	11Z	12Z	13Z	14Z
VMP3 - 237												
user status	Stopped	Stopped	Stopped	Stopped	Stopped	Stopped	Stopped	Stopped	Stopped	Stopped	Stopped	Stopped
tech. amplifier									VMP3B-4A			
Ewe	-27.397 μ V	-8.265 V	-0.274 mV	-0.092 mV	0.051 mV	-13.490 V	-0.077 mV	-2.569 V	-1.112 V	-13.529 V	-13.493 V	-7.330 μ V
I	0.000 A	0.000 A	0.000 A	0.000 A	0.000 A	0.000 A	0.000 A	0.000 A	0.000 A	0.000 A	0.000 A	0.000 A
buffer	0%	0%	0%	0%	0%	0%	0%	0%	0%	0%	0%	0%

Show window at startup Close

The instrument and the channel numbers are indicated at the bottom of the window



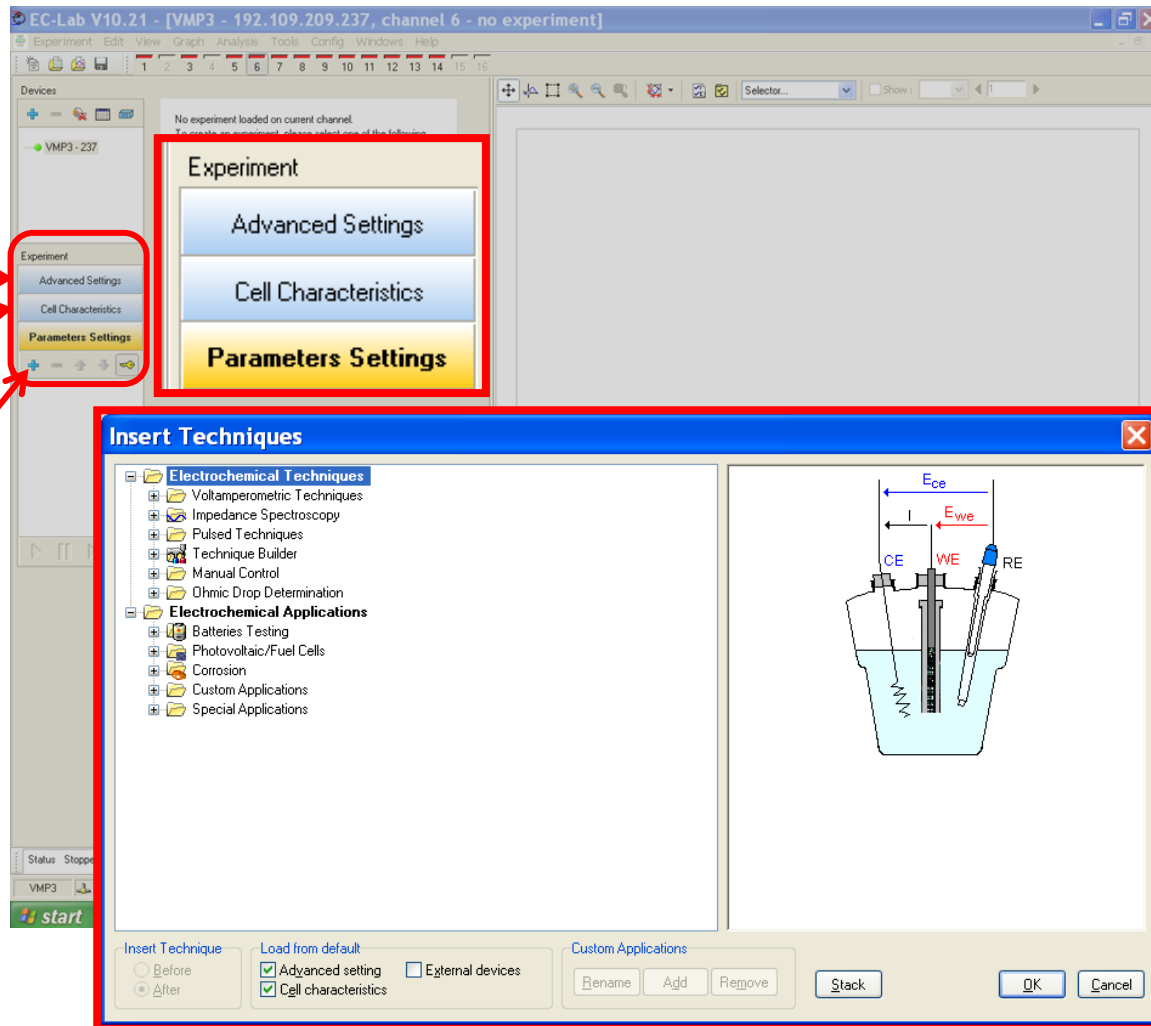
When the instrument(s) and the channels are selected,

- The user has to fill in the:
 - « Advanced settings » window
 - « Cell Characteristics » window

And

- add techniques in the experiment with the « + » button.

Setting and launching experiment will be shown in another « Getting started with EC-Lab » presentations.



Select the instrument (highlight in blue)

Click on the  button.

