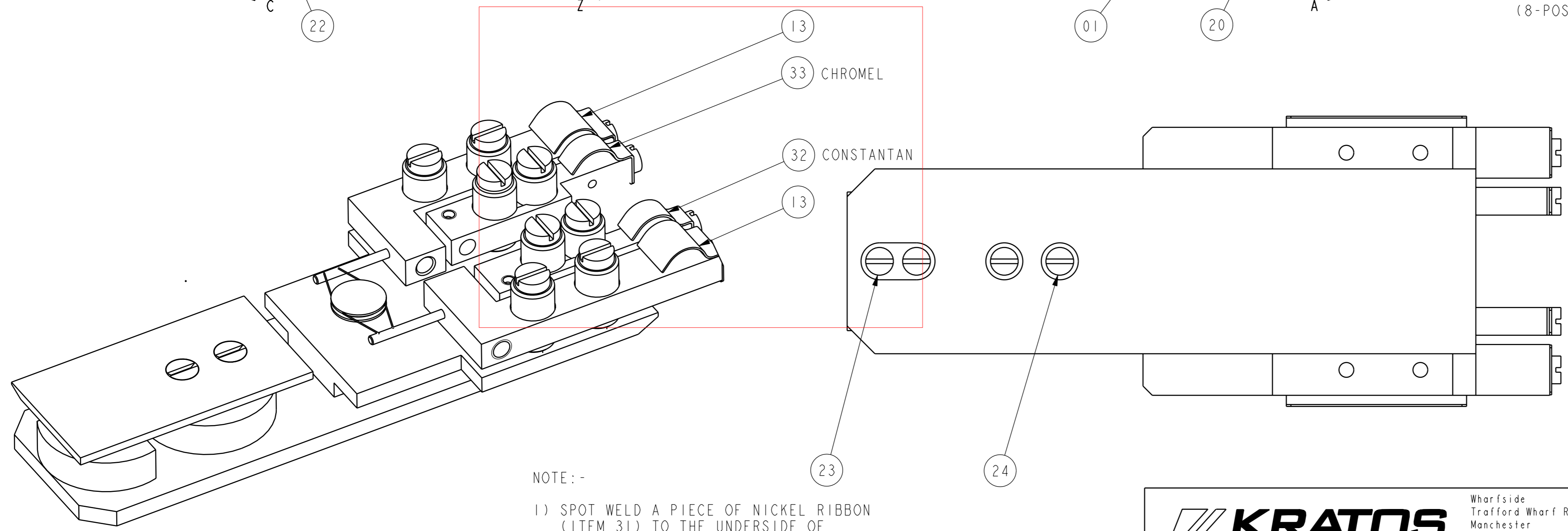
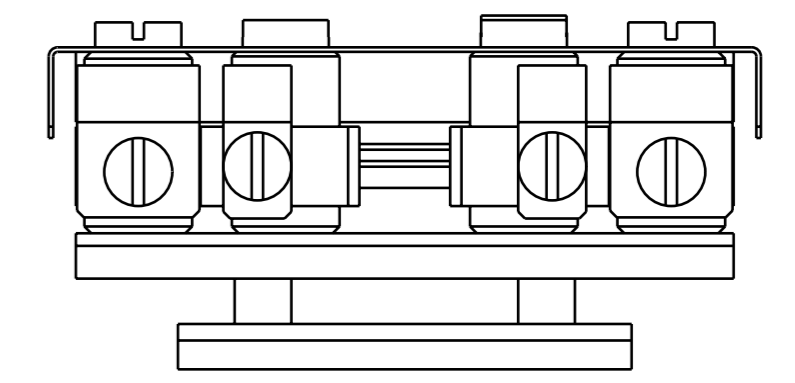
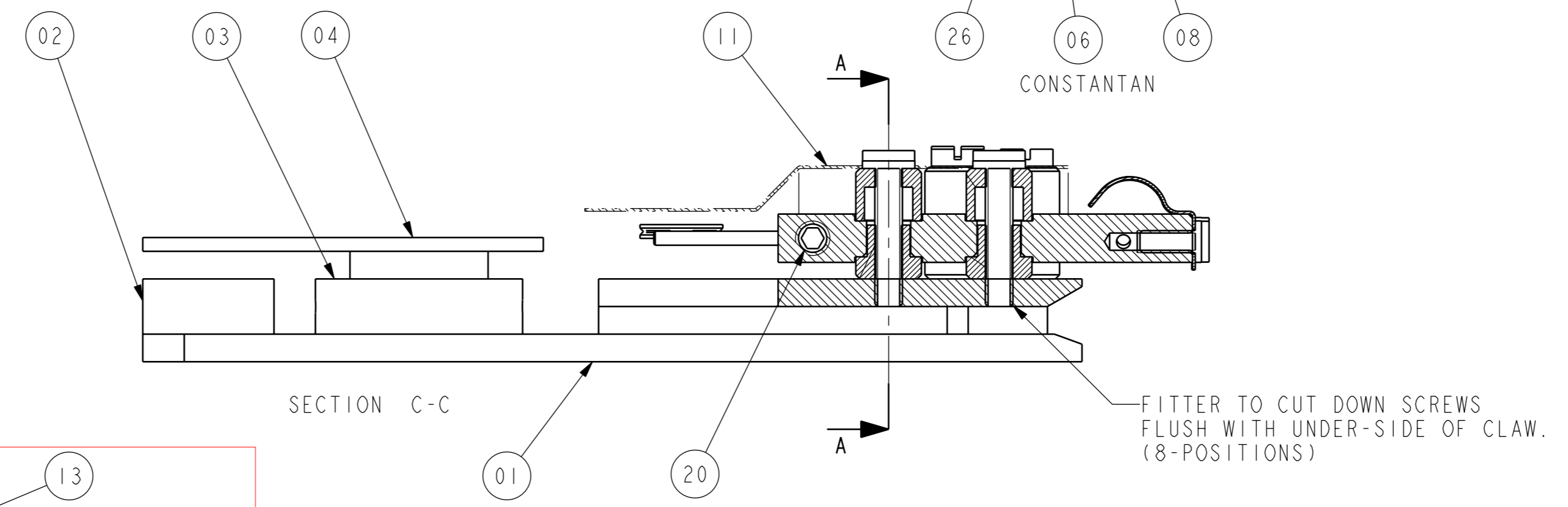
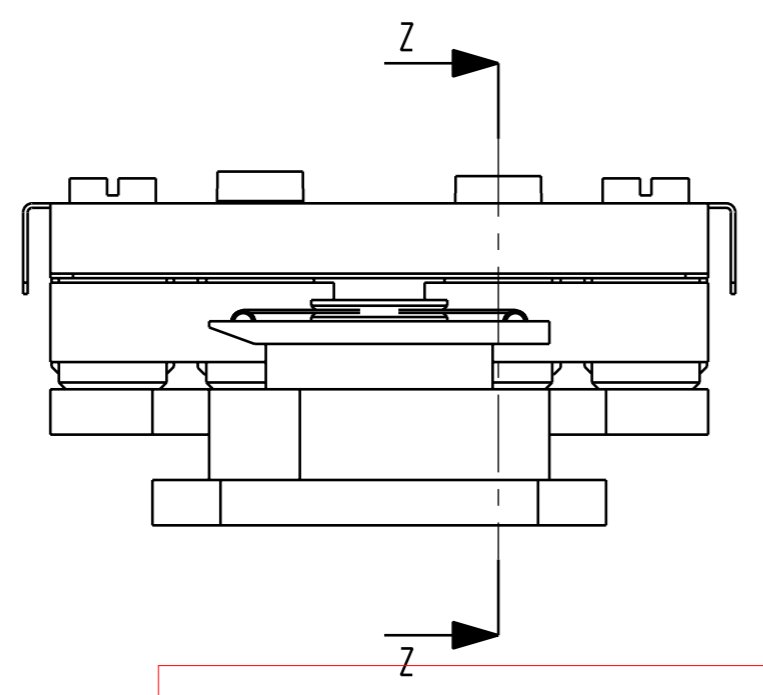
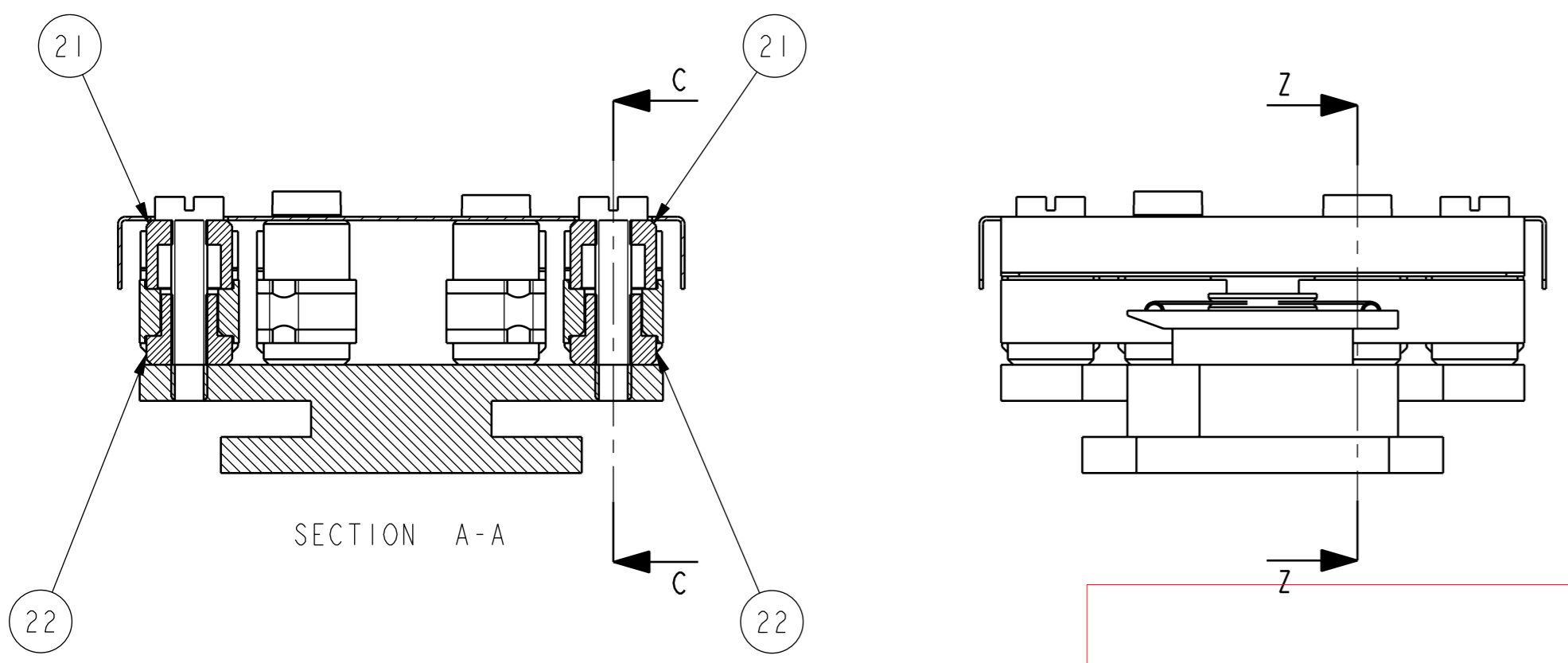
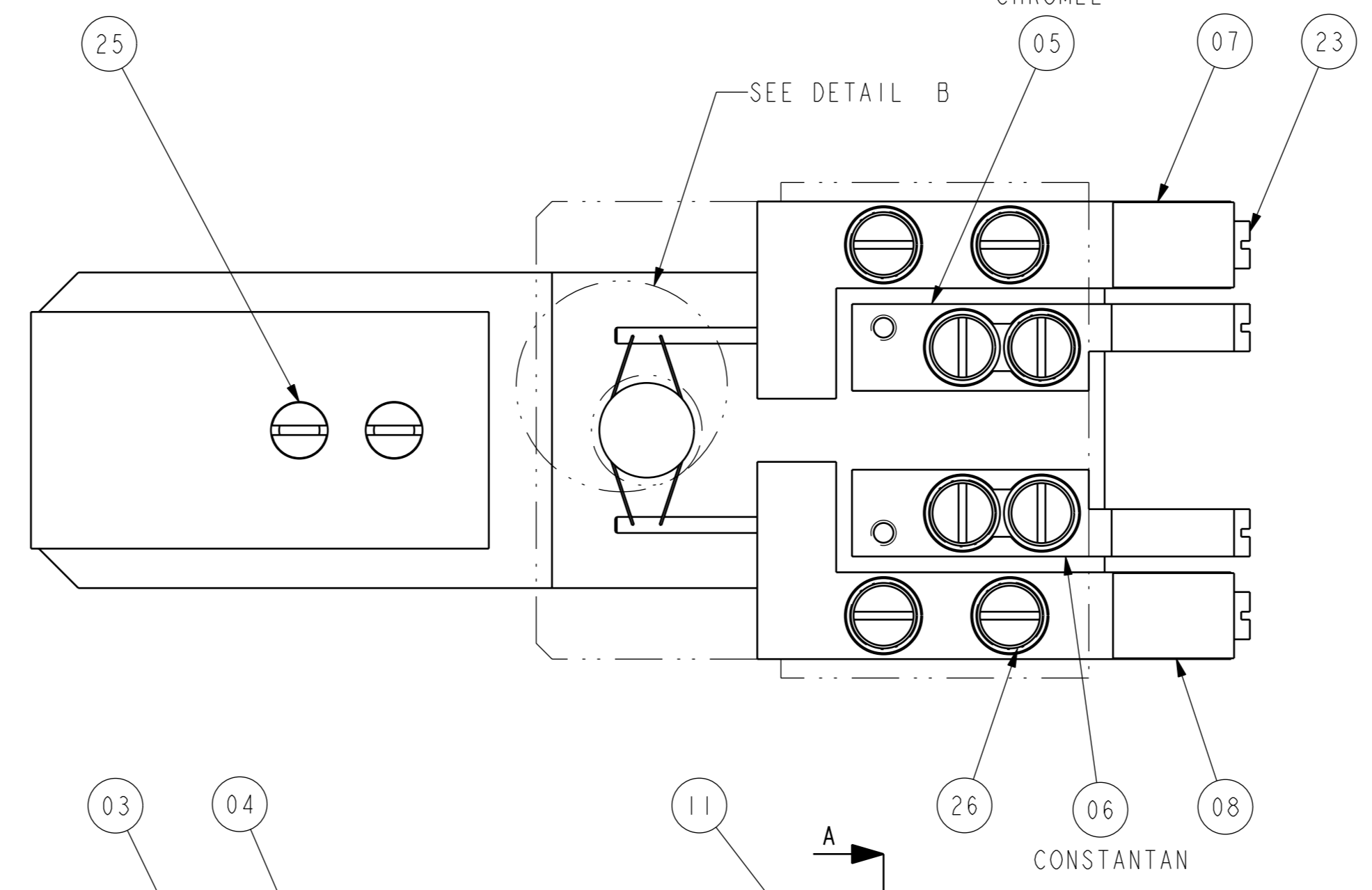
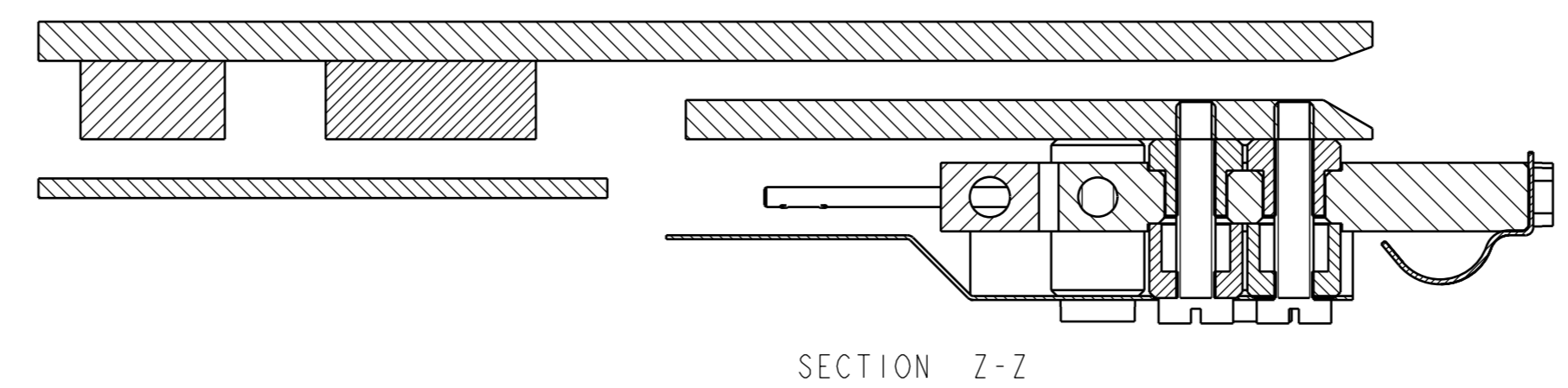
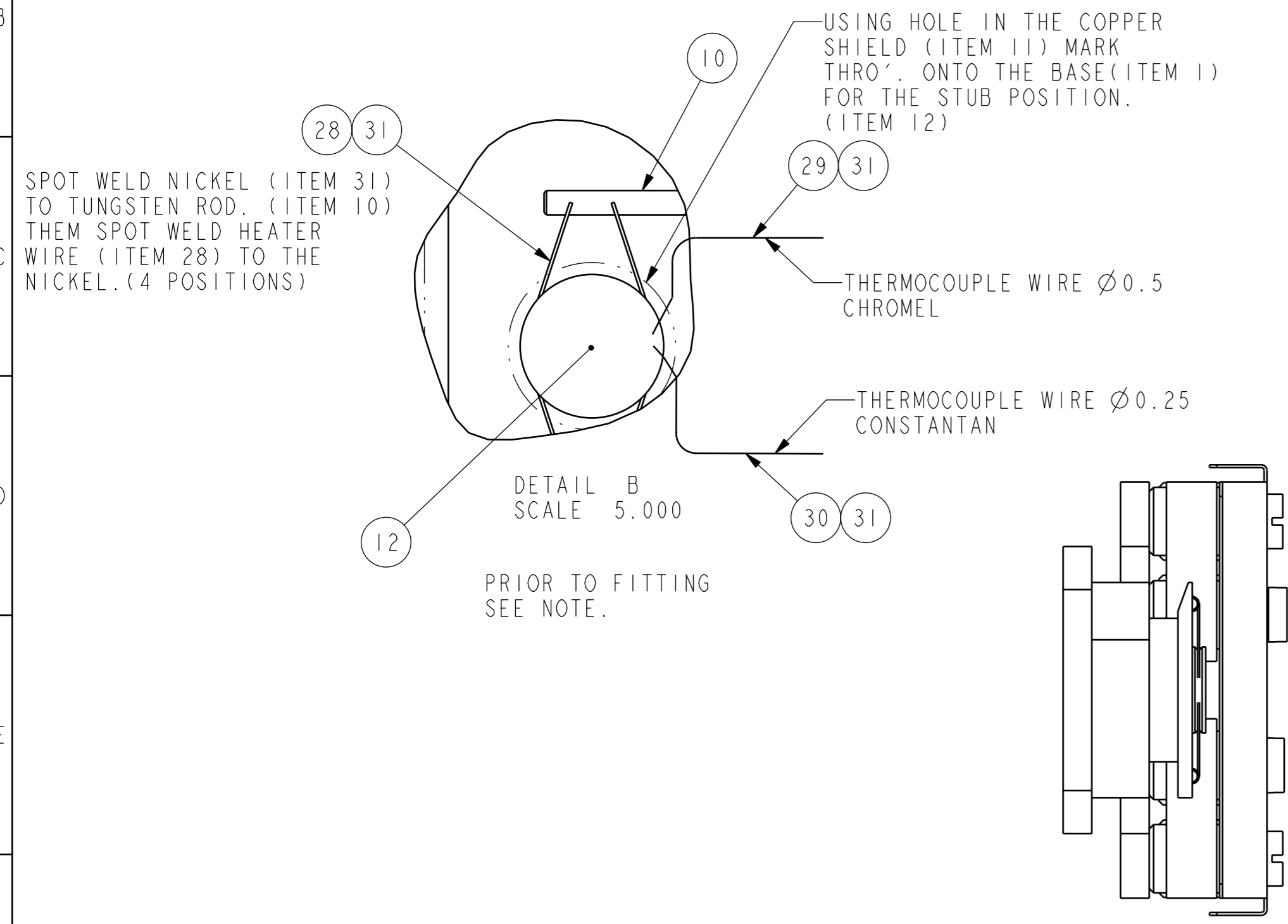


DRAWING NUMBER:	BE8165AA
REVISION:	
DRAWN:	A. FLEETWOOD
DATE:	02.02.10
APPROVED:	G. HUSSEY
DCR/PROJ.:	
DRAWN:	A. FLEETWOOD
DATE:	13.06.11
DCR/PROJ.:	14715
APPROVED:	P. LYNN
ITEMS 5&6 REDEFINED THERMOCOUPLE DETAIL CHANGED.	



- NOTE: -
- 1) SPOT WELD A PIECE OF NICKEL RIBBON (ITEM 31) TO THE UNDERSIDE OF THE SAMPLE STUB IN THE CENTRE, FRONT. (ITEM 12) SEE DETAIL 'B'
  - 2) SPOT WELD THERMOCOUPLE TO THE NICKEL.

PRIOR TO FITTING SEE NOTE.

SEE TEST PROCEDURE TSE4351A

**KRATOS ANALYTICAL**  
A SHIMADZU GROUP COMPANY

Wharfside  
Trafford Wharf Road  
Manchester  
M17 1GP  
United Kingdom  
Tel: +44 (0)161 888 4400  
Fax: +44 (0)161 888 4401  
© 2010 KRATOS ANALYTICAL Ltd.

UNLESS OTHERWISE STATED THESE STANDARDS MUST BE FOLLOWED:  
1. ISO 2768 (BS EN 22160)  
LINEAR AND ANGULAR TOLERANCES  
ISO 2768 mK  
2. INTERNAL RADII: R0.3 MAX.  
EXTERNAL EDGES: 0.3x45° MAX.  
3. REMOVE ALL BURRS AND SHARP EDGES  
4. MACHINED SURFACES: NA

MATERIAL:	SEE PARTS LIST	SCALE:	3.000
FINISH:	CLEAN	SHEET SIZE:	841 x 594 A1
SIMILAR EDTM:	CE4336AA	REFERENCES:	
TITLE:	SAMPLE BAR ASSEMBLY, TPD SAMPLE HOLDER.		
DRAWING NUMBER:	BE8165AA		