

Air Cooling Units For Turbomolecular Drag Pumps With TC

Safety Instructions

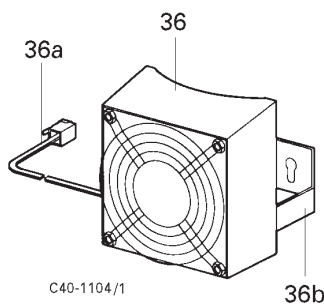


If the air cooling unit has a mains cable the electrical connections must be carried out by qualified personnel in compliance with local regulations. The mains plug may only be connected to the mains voltage after the air cooling unit has been fitted to the turbopump.

Pump typ	Air cooling unit order Number
TMH/TMU 071	PM Z01 253
TMH/TMU 261	PM Z01 252
TMH/TMU 262	PM Z01 252
TMH/TMU 521	PM Z01 251
TMH/TMU 1001	PM Z01 250
TMH/TMU 1601	PM Z01 250

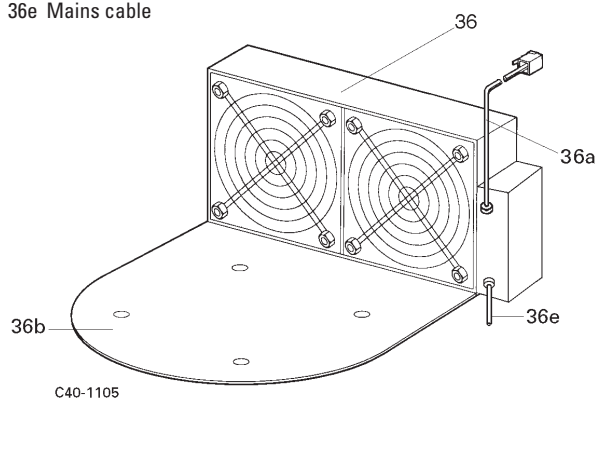
Air cooling units for TMH/TMU 071, TMH/TMU 261/262 and TMH/U 521

- 36 Fan
- 36a Control lead, air cooling unit/TC
- 36b Holder



Air cooling units for TMH/TMU 1001 and TMH/TMU 1601

- 37 Fan
- 36a Control lead, air cooling unit/TC
- 36b Holder
- 36e Mains cable



Proper Use

The air cooling unit may only be used for cooling Pfeiffer Vacuum turbomolecular pumps with integrated Electronic Drive Unit TC 600 and TC 100 (please see the table below).

Installation

Air cooling units for TMH/TMU 071, TMH/TMU 261/262, TMH/TMU 521

- ➔ Position the turbopump horizontally with the fore-vacuum flange 2 down to fit the air cooling unit.

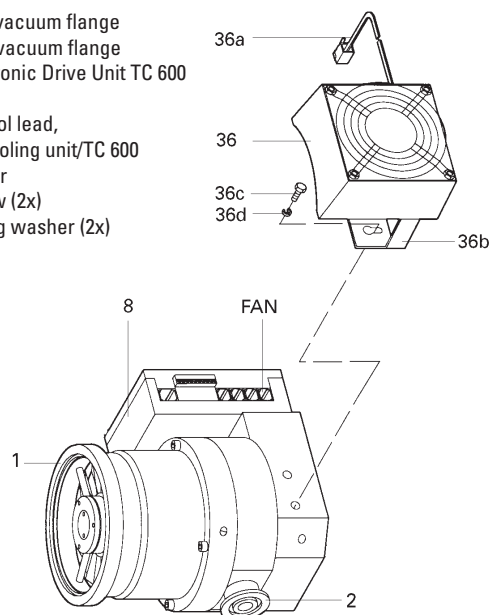


C- Version pumps must not be placed on the high vacuum flange owing to the danger of contamination from the lubricant.

- ➔ Half screw the two enclosed hexagonal screws 36c with spring washers 36d in the securing holes into the lower part of the pump. Position the spring washers on the heads of the screws.
- ➔ Push holder 36b over the screw heads and spring washers.
- ➔ Tighten the screws with an open jawed wrench.
- ➔ Place the pump back onto its feet.

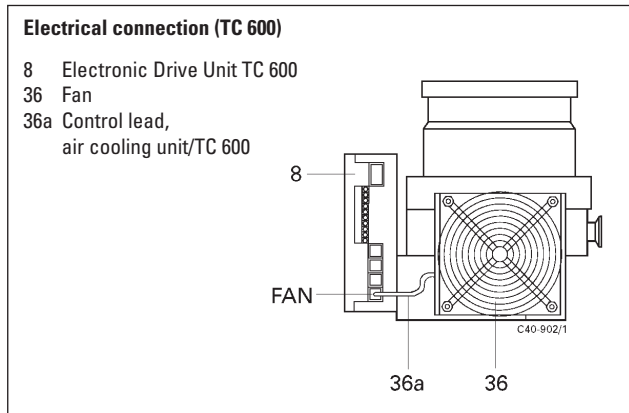
Fitting the air cooling unit (TC 600)

- 1 High vacuum flange
- 2 Fore-vacuum flange
- 8 Electronic Drive Unit TC 600
- 36 Fan
- 36a Control lead, air cooling unit/TC 600
- 36b Holder
- 36c Screw (2x)
- 36d Spring washer (2x)



Electrical connection TC 600

- ➔ Plug control lead 36a into the connection "FAN" of the TC 600 (8) on the turbopump.



Electrical connection TC 100

- ➔ Connect the air cooling to the Pumping Station Control Unit TCS 010. For details please refer to Operating Instructions for the TCS 010.

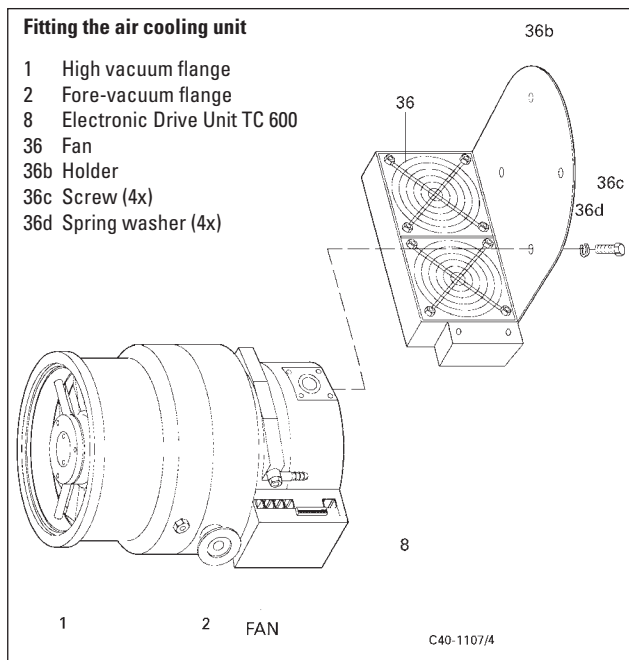
Air cooling units for TMH/TMU 1001 and TMH/TMU 1601

- ➔ Position the turbopump horizontally with the fore-vacuum flange 2 down to fit the air cooling unit.



Pump must **not** be placed on their high vacuum flange owing to the danger of contamination from the lubricant.

- ➔ Remove the stoppers from the threaded holes on the base of the pump.
- ➔ Screw the complete air cooling unit onto holder 36b with the four screws 36c and spring washers 36d enclosed.
- ➔ Place the pump again on its feet.

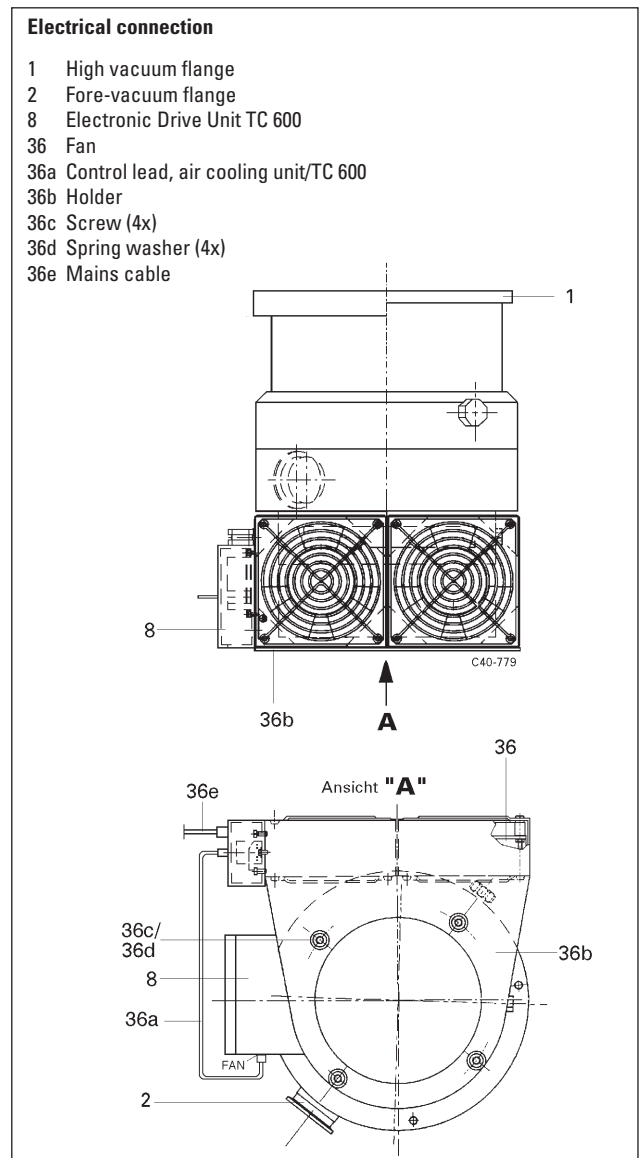


Electrical connection



Ensure correct mains voltage range.

- ➔ Plug control lead 36a into the connection "FAN" of the TC 600 (8) on the turbopump.
- ➔ Connect mains cable 36e to the mains voltage.



Operations

Please refer to the operating instructions for the relevant turbopump.