



HP **JetDirect** **Print Servers**

HP JetDirect External Print Servers

300X, 500X, 170X, EX Plus

Hardware Installation
Guide

Hardware Installation Guide

**HP JetDirect External
Print Servers**

©Copyright
Hewlett-Packard Company 2014.
All rights reserved.

Reproduction, adaptation or translation without prior written permission is prohibited, except as allowed under the copyright laws.

Publication number 5969-3466

November 2014

Applicable Products:

HP J2591A, HP J3258B,
HP J3263A, HP J3264A, HP J3265A

Trademark Credits

Microsoft[®], MS-DOS[®], Windows[™], Microsoft Windows NT[™] are trademarks or U.S. registered trademarks of Microsoft Corporation. Novell[®] and NetWare[®] are registered trademarks of Novell Corporation. IBM LAN Server[®] is a registered trademark of International Business Machines Corp. Ethernet is a registered trademark of Xerox Corporation. PostScript[™] is a trademark of Adobe Systems, Incorporated, which may be registered in certain jurisdictions. UNIX[®] is a registered trademark in the United States and other countries, licensed exclusively through X/Open Company Limited.

Warranty

The information contained in this document is subject to change without notice.

HEWLETT-PACKARD COMPANY
MAKES NO WARRANTY OF ANY
KIND WITH REGARD TO THIS
MATERIAL, INCLUDING, BUT NOT
LIMITED TO, THE IMPLIED
WARRANTIES OF
MERCHANTABILITY AND FITNESS
FOR A PARTICULAR PURPOSE.

Hewlett-Packard shall not be liable for errors contained herein or for incidental or consequential damages in connection with the furnishing, performance or use of this material.

A copy of the specific warranty terms applicable to your HP product and replacement parts can be obtained from your HP Sales and Service Office or Authorized dealer.

For warranty service information, see appendix C at the back of this manual.

Customer Support

Hewlett-Packard has support services available to help you in case of difficulties with your HP JetDirect 300X, 500X, 170X, and EX Plus external print servers.

Safety Considerations

Prior to the installation and use of this product, review all safety markings and instructions.



Instruction Manual Symbol. If the product is marked with this symbol, refer to the product manuals to protect the product from damage.

WARNING Denotes a hazard that can cause injury.

CAUTION Denotes a hazard that can damage equipment or data.

Do not proceed beyond a WARNING or CAUTION notice until you have understood the hazard and have taken appropriate steps.

Servicing. Any service, adjustment, maintenance, or repair of this product must be performed only by authorized service-trained personnel.

Power. These products do not have a power switch; they are powered on when either the power cord or AC adapter is plugged into a power outlet. The power outlet shall be installed near the equipment and shall be easily accessible for quick disconnect.

Hewlett-Packard Company
8000 Foothills Boulevard
Roseville, California
95747-6588

Contents

1 Product Overview

| | |
|---|-----|
| Supported Printers, Plotters, and HP All-in-One | |
| Peripherals | 1-2 |
| Network Management | 1-3 |
| Network Configuration | 1-3 |
| Components and Features | 1-4 |
| Transmission Media | 1-6 |
| Hardware Requirements | 1-7 |
| LEDs | 1-8 |
| Switches (HP JetDirect 300X and 500X) | 1-9 |

2 Hardware Installation

| | |
|---|-----|
| Verifying the Hardware Installation | 2-3 |
| Selecting a Configuration Page Language | 2-3 |
| Resetting to Factory Defaults | 2-4 |

A Specifications

| | |
|-------------------------------------|-----|
| Physical Specifications | A-1 |
| Power Requirements | A-2 |
| Environmental | A-4 |
| Acoustic Noise | A-4 |
| Electromagnetic Emissions | A-4 |
| Safety | A-4 |

B Regulatory Statements

| | |
|-------------------------------------|-----|
| FCC Statement (U.S.A) | B-1 |
| European Community | B-1 |
| Declaration of Conformity | B-2 |

Product Overview

This hardware guide covers the following Hewlett-Packard print servers:

| Three-Port Print Servers | | One-Port Print Servers | |
|--------------------------|--------|------------------------|--------|
| HP JetDirect 500X | J3265A | HP JetDirect 170X | J3258B |
| HP JetDirect 500X | J3264A | HP JetDirect EX Plus | J2591A |
| | | HP JetDirect 300X | J3263A |

These print servers send data to printers at speeds of up to 360 kilobytes per second, which is as fast or faster than many internal print servers. The external print servers enhance workgroup capability by letting you place your printers, plotters, or HP All-in-One peripherals¹ at convenient locations directly on the network, and by increasing network printer performance and management.

The one-port print servers connect one printer, plotter, or All-in-One peripheral with a parallel port to the network. These print servers have one high-speed, bidirectional parallel port (IEEE 1284 standard) that supports multiple network operating systems (NOSs) (Figure 1.1).

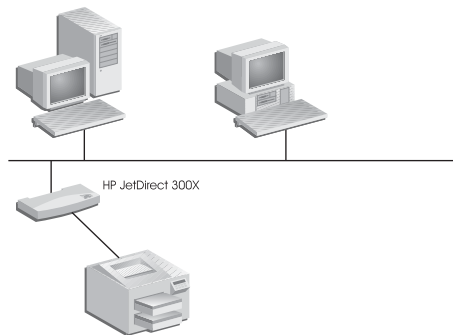


Figure 1.1 Use an HP JetDirect 300X, 170X, or EX Plus external print server to connect one peripheral to your network.

1. The scanning functionality of HP All-in-One peripherals is not supported by J2591A.

The HP JetDirect 300X provides connectivity to 10Base-T and 100Base-TX networks. The HP JetDirect 170X provides connectivity to 10Base-T networks. The HP JetDirect EX Plus provides connectivity to 10Base-T and 10Base2 networks.

The HP JetDirect three-port print servers have three high-speed, bidirectional parallel ports (IEEE 1284) that support multiple network operating systems (NOSs). Each port operates independently which, in effect, gives you three print servers in one (Figure 1.2).

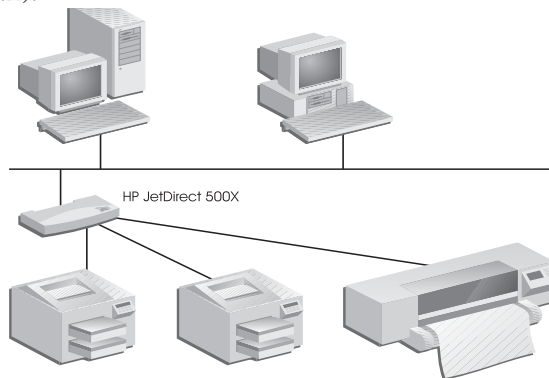


Figure 1.2 Use the HP JetDirect 500X print server to connect up to three peripherals to your network.

There are two models of the HP JetDirect 500X: one for 10Base-T, 100Base-TX, and 10Base2 networks (J3265A) and the other for Token Ring networks (J3264A). The 500X connects up to three printers, plotters, or HP All-in-One peripherals with parallel ports to a network.

Supported Printers, Plotters, and HP All-in-One Peripherals

The HP JetDirect external print servers support almost any printers¹, plotters, or HP All-in-One peripherals² with a parallel port, including those made by HP and other companies. To connect a serial printer, use a parallel-to-serial adapter.

-
1. GDI printers are not supported by HP JetDirect print servers.
 2. J3263A, J3264A, J3265A, and J3258B support the following HP All-in-One peripherals: HP LaserJet 1100A, the HP OfficeJetPro Series, and the OfficeJet R40 and R60.

Network Management






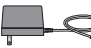
The HP JetDirect external print servers support the Simple Network Management Protocol (SNMP), which enables remote printer management and troubleshooting. A standard SNMP agent resides on these print servers. Any standard SNMP-based application can be used to access and manage these print servers.

Peripherals connected to an HP JetDirect external print server appear as intelligent nodes on the network and are accessible through various diagnostic utilities using the SNMP/IPX and SNMP/IP protocols. These print servers also collect network statistics and error messages to aid in network management and troubleshooting.

Network Configuration

The HP JetDirect 300X, 170X, and 500X print servers provide an embedded web server that can be accessed through a supported web browser.

Components and Features

| | |
|---|---|
|  | <p>HP JetDirect 300X (J3263A):</p> <ul style="list-style-type: none"> • Bidirectional parallel port (IEEE 1284). • Network port (Ethernet or Fast Ethernet): RJ-45 for 10Base-T or 100Base-TX. • Test button (sends print server configuration page). • 2 LEDs on front indicate LAN activity/status. • 2 LEDs on back indicate 10 or 100 Mbps. |
|  | <p>HP JetDirect EX Plus (J2591A):</p> <ul style="list-style-type: none"> • Bidirectional parallel port (IEEE 1284). • Network port (Ethernet): RJ-45 (10Base-T) or BNC (10Base2). • Test button (sends print server configuration page). • 2 LEDs on front indicate LAN activity/status. |
|  | <p>HP JetDirect 170X (J3258B):</p> <ul style="list-style-type: none"> • Bidirectional parallel port (IEEE 1284). • Network port (Ethernet): RJ-45 (10Base-T). • Test button (sends print server configuration page). • 2 LEDs on front indicate LAN activity/status. |
|  | <p>HP JetDirect 500X (J3265A, J3264A):</p> <ul style="list-style-type: none"> • 3 bidirectional parallel ports (IEEE 1284). • Network port: J3265A (Ethernet): RJ-45 (10Base-T, 100Base-TX) and BNC (10Base2). J3264A (Token Ring): DB9 (shielded twisted-pair) and RJ-45 (unshielded twisted-pair). • Test button (sends print server configuration page to Port 1). • 2 LEDs on front indicate LAN activity/status. • J3265A: 2 LEDs on back indicate 10 or 100 Mbps. • J3264A: switch for 4 or 16 Mbps. |
|  | <p>HP JetDirect Quick Start Guide:</p> <p>Included with every external print server. Explains how to install the print server and configure it for Novell or Microsoft NOSs.</p> |
|  | <p>Power Module:</p> <p>Included with every external print server: Provides power to the HP JetDirect external print servers.</p> |

Transmission Media

| | | |
|---|--|---|
| IEEE 802.3 Ethernet | 10Base2 | Thin coaxial cable with BNC connector. |
| IEEE 802.3 Ethernet | 10Base-T | Four pairs of unshielded twisted-pair Category 3, 4, or 5 cable with RJ-45 connector.* |
| IEEE 802.3 Fast Ethernet | 100Base-TX | Four pairs of unshielded twisted-pair Category 5 cable with RJ-45 connector for 10 or 100 Mbps operation. |
| IEEE 802.5 Token Ring | Shielded twisted-pair cable with 9-pin D-connector (operating at 4 Mbps or 16 Mbps). | |
| IEEE 802.5 Token Ring | Four pairs of unshielded twisted-pair cable with RJ-45 connector (operating at 4 Mbps or 16 Mbps). | |
| *For 10Base-T, the print server works only with a 10Base-T LAN hub or concentrator that supports link beat (link test pulse) signals. | | |

Hardware Requirements

| | |
|--|---|
| HP JetDirect 300X | J3263A (Ethernet 10Base-T or 100Base-TX) |
| HP JetDirect 170X | J3258B (Ethernet 10Base-T) |
| HP JetDirect EX Plus | J2591A (Ethernet 10Base-T or 10Base2) |
| HP JetDirect 500X | J3265A (Ethernet 10Base-T, 100Base-TX, or 10Base2) |
| | J3264A (Token Ring): DB9 (shielded twisted-pair) or RJ-45 (unshielded twisted-pair) |
| Printer, plotter, or HP All-in-One peripheral | Bidirectional parallel port (IEEE 1284) (or parallel-to-serial adapter for serial ports) |
| Recommended HP cables and part numbers | 2 meter A-to-B parallel cable (C2950A) 3 meter A-to-B parallel cable (C2951A) 3 meter A-to-C parallel cable (C2946A) 10 meter A-to-C parallel cable (C2947A) |
| Power Module (Included) | See Appendix A for the power module for your country |

LEDs

On the top of the print server are Status and LAN Activity LEDs:

| If the Status LED is... | And the Activity LED is... | Then the print server is... |
|-------------------------|----------------------------|--|
| Off | Off | Not receiving power. |
| On | Off | On; no LAN activity detected. |
| On | Blinking | On; LAN activity detected. |
| Off | On (Solid) | Encountering a fault during self-test or operation. |
| Blinking | Off | Encountering one of the following conditions: <ul style="list-style-type: none"> ● running a self-test ● not configured. ● not able to attach to the network. |
| On | On | On; heavy LAN activity detected. |

Between the Status and LAN Activity LEDs is the Test button, used to print a configuration page. See Chapter 2 for more information.

On the back of the HP JetDirect 300X (J3263A) and 500X (J3265A) Print Servers, there are LEDs that indicate the operating speed (10 Mbps or 100 Mbps) (Figure 1.3). (This applies to 10Base-T and 100Base-TX networks only.)

| If the 10 (left) LED is... | And the 100 (right) LED is... | Then the print server has... |
|----------------------------|-------------------------------|-------------------------------|
| Off | Off | No link established. |
| On | Off | Link established at 10 Mbps. |
| Off | On | Link established at 100 Mbps. |

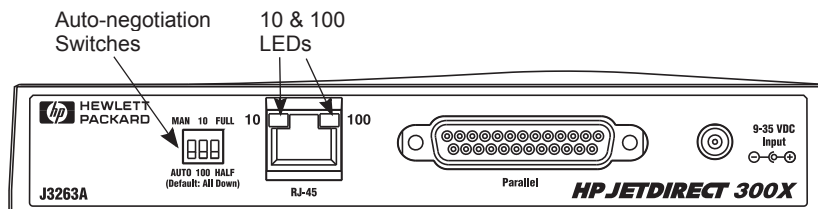


Figure 1.3 Back of HP JetDirect 300X Print Server. (For the HP JetDirect 500X, the LEDs are also located next to the RJ-45 port.)

Switches (HP JetDirect 300X and 500X)

The HP JetDirect 300X and 500X Print Servers have configuration switches that should be used only if the print server fails to link on the network. The factory-default setting of all 3 switches down will suit most installations. These switches only apply to 10Base-T and 100Base-TX networks only.

When the first switch is set to Auto, the other two switch settings are ignored; the server auto-negotiates the link speed and duplex setting with the connected switch or hub device. Even with devices that don't auto-negotiate, the print server detects the network link speed and uses half duplex.

Although nearly always unnecessary, you can control the settings directly by positioning the switches as shown in the table below, *only if you are certain of the duplex setting and speed at which the switch or hub is operating.*

| If the auto switch is set to... | And if the speed switch is set to... | And if the duplex switch is set to... | Then the settings are... |
|---------------------------------|--------------------------------------|---------------------------------------|-----------------------------------|
| AUTO (down) | either position (default=down) | either position (default=down) | Auto-negotiated (factory default) |
| MANUAL (up) | 10 (up) | HALF (down) | 10Base-T Half-duplex |
| MANUAL (up) | 100 (down) | HALF (down) | 100Base-TX Half-duplex |
| MANUAL (up) | 10 (up) | FULL (up) | 10Base-T Full-duplex |
| MANUAL (up) | 100 (down) | FULL (up) | 100Base-TX Full-duplex |

Note

In Auto mode, you can see the network speed being used by checking the LEDs at the RJ-45 connector. See p.1-8.

Hardware Installation

To install the HP JetDirect external print servers, you need to complete these steps.

- Verify that your printer parallel port(s) work properly.
- Connect the print server to the network and printer(s) and plug in the print server.
- Generate a configuration page from the print server.

After you install the print server, the next step will be to configure it.

Follow these instructions to install the HP JetDirect external print servers. (“Printer” refers to any peripheral you are connecting to the print server.)

1. To ensure your printer(s) work properly, do one of the following:
 - send data through the parallel port of each printer you are connecting to the print server, or
 - generate a printer self-test page (refer to your printer manual for instructions).
2. Switch off the power for each printer.
3. For a Token Ring print server (J3264A), set the data-rate switch to the appropriate speed (4 Mbps or 16 Mbps) (Figure 2.1). To do this, take a pen or similar object and slide the switch up for 16 Mbps or down for 4 Mbps.

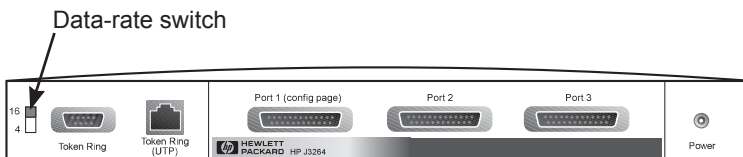


Figure 2.1 Token Ring data-rate switch set at 16 Mbps on the J3264A

4. For the 300X or 500X Ethernet print servers (J3263A or J3265A), verify that the auto-negotiation switches are in their default positions—all down. (For other options, see page 1-9.)

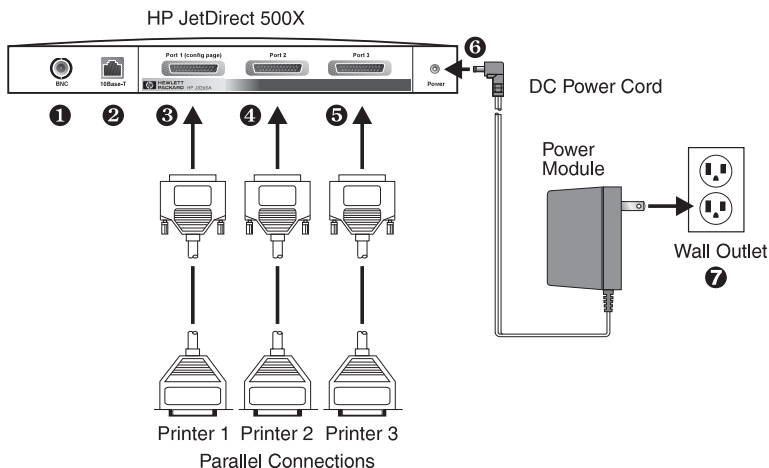


Figure 2.2 Hardware connections using a U.S. power module for the HP JetDirect J3265A Print Server

Note

In the following steps, the circled numbers correspond to those in Figure 2.2. The HP JetDirect 300X, 170X, and EX Plus have one printer port ③. The HP JetDirect 500X Token Ring and 300X have no BNC port ①. On the HP JetDirect 500X and 300X, the RJ-45 connector ② is used for either 10 or 100 Mbps operation. The JetDirect 170X has no BNC port ①.

-
5. Connect the print server to the network ① or ②.
 6. Connect the print server to the printer(s) ③, ④, and ⑤.

If you are attaching only one printer to the 500X, HP recommends that you attach that printer to Port 1 ③.

If you are using DLC/LLC network protocols, your printer *must* be connected to Port 1 (the DLC/LLC protocol is supported only on Port 1).

7. Plug the power module into the power receptacle in the back of the print server ⑥.

8. Plug the power module into the wall outlet ⑦. Since there is no power switch, the print server is switched on after you plug it in.
9. Check the LEDs on the front of print server. The Status LED should be green—either steady or blinking.

If the internal self-test failed, the Activity LED will be on and the Status LED will be off. For troubleshooting information, see the Troubleshooting chapter in the software guide shipped with your print server.

10. Wait about 10 seconds. For 10Base-T and 100Base-TX networks, check the 10 and 100 LEDs on the back to verify that the correct one is lit. See p.1-8.
11. Switch on the power on your printer(s) to begin printing.

Verifying the Hardware Installation

To verify the installation of the HP JetDirect external printer server, generate a configuration page. This page is generated from Port 1 of the printer server.

To generate a configuration page, follow these steps:

1. Print a configuration page by pressing and releasing the Test button on the print server.
2. If the configuration page displays the message I/O CARD READY, you have successfully completed the hardware installation.

Selecting a Configuration Page Language

The configuration page for the HP JetDirect external print server is sent to the printer attached to Port 1. The printer language is auto-detected the first time the print server is powered up and after each cold reset.

If you want to change the detected printer language, use the LEDs and Test button to select a PDL for the configuration page. When you hold down the Test button for three seconds, the LEDs begin to cycle through four configurations, as outlined in the following table.

Release the Test button when you get the right PDLs, and the configuration page will be printed.

| For PDL... | The Status LED is... | And the Activity LED is... |
|-------------------|-----------------------------|-----------------------------------|
| HP PCL (default) | Off | Off |
| ASCII | Off | On |
| Postscript | On | Off |
| HP-GL/2 | On | On |

When you first press the Test button, the Status and Activity LEDs are on and solid for about 3-4 seconds. Then they switch off, indicating they are cycling through the PDLs.

Resetting to Factory Defaults

Once you have configured the HP JetDirect external print server, the configuration settings are retained in memory unless you manually reset them.

(The firmware is not affected when you reset the configuration settings.)

To reset the configuration settings to their factory defaults, follow these steps:

1. Unplug the power cord from the print server.
2. While holding down the Test button on the print server, plug the power module into the print server and continue to hold down the Test button for five seconds. All previous configuration settings will be erased.

Specifications

Physical Specifications

| Product Number | Width | Height | Depth* | Weight |
|--|----------------------|--------------------|----------------------|----------------------|
| J2591A | 178 mm (7.0 in.) | 31 mm (1.2 in.) | 124 mm (4.9 in.) | 269 g (0.59 lbs.) |
| J3263A | 178 mm (7.0 in.) | 31 mm (1.2 in.) | 112 mm (4.4 in.) | 241 g (0.53 lbs.) |
| J3264A | 280 mm (11 in.) | 31 mm (1.2 in.) | 127 mm (5.0 in.) | 454 g (1 lb.) |
| J3265A | 280 mm (11 in.) | 31 mm (1.2 in.) | 141 mm (5.6 in.) | 440 g (0.97 lbs.) |
| J3258B | 180 mm (7.09 in.) | 33 mm (1.3 in.) | 115 mm (4.53 in.) | 224 g (0.49 lbs.) |
| *Measurement includes any protrusions for connectors, legs, etc. | | | | |

Power Requirements

| Power Modules for J3264A and J3265A | | | |
|--|------------------|---------------------|----------------------|
| Note: If two parts are listed for one country/region, either part can be used. | | | |
| Country | Part Num. | Input Rating | Output Rating |
| Australia, New Zealand, Argentina | 9100-5172 | 230-240VAC 50 Hz | 13 VDC @625 ma |
| | 0950-3358 | 230-240VAC 50 Hz | 13 VDC @800 ma |
| China | 0950-2808 | 230-240VAC 50 Hz | 13 VDC @625 ma |
| | 0950-3347 | 230-240VAC 50 Hz | 13 VDC @800 ma |
| Continental Europe | 9100-5166 | 220-240V 50 Hz | 13 VDC @625 ma |
| | 0950-3349 | 220-240V 50 Hz | 13 VDC @800 ma |
| Japan | 9100-5169 | 90-110V 50/60 Hz | 13 VDC @625 ma |
| | 0950-3352 | 90-110V 50/60 Hz | 13 VDC @800 ma |
| South Korea | 9100-5168 | 220-240V 50 Hz | 13 VDC @625 ma |
| | 0950-3351 | 220-240V 50 Hz | 13 VDC @800 ma |
| South Africa, India | 9100-5171 | 220-250V 50 Hz | 13 VDC @625 ma |
| | 0950-3354 | 220-250V 50 Hz | 13 VDC @800 ma |
| United Kingdom, Singapore, Ireland, Hong Kong | 9100-5167 | 220-240V 50 Hz | 13 VDC @625 ma |
| | 0950-3350 | 220-240V 50 Hz | 13 VDC @800 ma |
| USA, Canada, Latin America, Taiwan | 9100-5165 | 110-127V 60 Hz | 13 VDC @625 ma |
| | 0950-3348 | 110-127V 60 Hz | 13 VDC @800 ma |

| Power Modules for J2591A, J3263A, and J3258B | | | |
|--|------------------|---------------------|----------------------|
| Note: If two parts are listed for one country/region, either part can be used. | | | |
| Country | Part Num. | Input Rating | Output Rating |
| Australia, New Zealand, Argentina | 0950-3172 | 230-240VAC 50 Hz | 13 VDC @300 ma |
| | 9100-5172 | 230-240VAC 50 Hz | 13 VDC @625 ma |
| China | 0950-2806 | 230-240VAC 50 Hz | 13 VDC @300 ma |
| | 0950-2808 | 230-240VAC 50 Hz | 13 VDC @625 ma |
| Continental Europe | 0950-3170 | 220-240V 50 Hz | 13 VDC @300 ma |
| | 9100-5166 | 220-240V 50 Hz | 13 VDC @625 ma |
| Japan | 0950-3173 | 90-110V 50/60 Hz | 13 VDC @300 ma |
| | 9100-5169 | 90-110V 50/60 Hz | 13 VDC @625 ma |
| South Korea | 9100-5168 | 220-240V 50 Hz | 13 VDC @625 ma |
| South Africa, India | 9100-5171 | 220-250V 50 Hz | 13 VDC @625 ma |
| United Kingdom, Singapore, Ireland, Hong Kong | 0950-3171 | 220-240V 50 Hz | 13 VDC @300 ma |
| | 9100-5167 | 220-240V 50 Hz | 13 VDC @625 ma |
| USA, Canada, Latin America, Taiwan | 0950-3169 | 110-127VAC 60 Hz | 13 VDC @300 ma |
| | 9100-5165 | 110-127V 60 Hz | 13 VDC @625 ma |

Environmental

| | Operating | Non-Operating |
|--------------------------|---|-----------------------------------|
| Temperature | 0°C to 55°C (32°F to 131°F) | -40°C to 70°C (-40°F to 158°F) |
| Relative Humidity | 15% to 95% at 40°C (104°F), non-condensing | 90% at 65°C (149°F) |
| Altitude | 4.6 km (@15,000 ft.) | 4.6 km (@15,000 ft.) |

Acoustic Noise

Not applicable

Electromagnetic Emissions

FCC part 15 Class A (U.S.A.), ICES-003 (Canada), VCCI Class 1 (in Japan), CISPR-22/EN55022 Class A, CNS 13438 (Taiwan), AS/NZS 3548 (Australia/New Zealand), GOST 29216 (Russia)

Note For EU compliance, see the Declaration of Conformity in Appendix B.

Safety

Products comply with:

IEC 950: (1991)+A1,A2,A3,A4/EN60950 (1992)+A1,A2,A3,A4

UL 1950

CSA 950

NOM-019-SCFI-1994 and NOM-001-SCFI-1993

Regulatory Statements

FCC Statement (U.S.A)

This equipment has been tested and found to comply with the limits for a Class A digital device, pursuant to Part 15 of the FCC Rules. These limits are designed to provide reasonable protection against interference when the equipment is operated in a commercial environment. This equipment generates, uses, and can radiate radio frequency energy and, if not installed and used in accordance with the instruction manual, may cause interference to radio communications. Operation of this equipment in a residential area is likely to cause interference in which case the user will be required to correct the interference at their own expense.

Pursuant to Part 15.21 of the FCC Rules, any changes or modifications to this equipment not expressly approved by the Hewlett-Packard Company, may cause interference and void the FCC authorization to operate this equipment.

Attaching this product in an FCC Level B product results in an FCC Level A Composite System as defined in the FCC Rules and Regulations.

The Federal Communications Commission has prepared a booklet titled Interference Handbook (1986), which may be helpful to you. This booklet stock number 004-000-004505-7) may be purchased from the Superintendent of Documents, U.S. Government Printing Office, Washington, D.C. 20402.

European Community


This equipment complies with CISPR22/EN55022 Class A.

Note

This is a class A product. In a domestic environment, this product may cause radio interference, in which case the user may be required to take adequate measures.

Declaration of Conformity

The following Declaration complies with ISO/IEC Guide 22 and EN 45014. It identifies the product, the manufacturer's name and address, and applicable specifications recognized in the European community.

| DECLARATION OF CONFORMITY according to ISO/IEC Guide 22 and EN45014 | |
|--|---|
| Manufacturer's Name: | Hewlett-Packard Company |
| Manufacturer's Address: | 8000 Foothills Blvd. Roseville, CA 95747-5677 U.S.A. |
| declares that the product: | |
| Product Name: | HP JetDirect 300X, 500X, 170X, Ex Plus |
| Model Number: | J3263A, J3265A, J3264A, J3258B, J2591A |
| conforms to the following Product Specifications: | |
| Safety: | EN60950 (1992) +A1,A2,A3,A4,AII / IEC 950 (1991) +A1,A2,A3,A4 EN60825-1 (1994) / IEC 825-1 (1993), Class 1 GB 4943 (1995) |
| EMC: | EN 55022 (1994) +A1,A2 / CISPR-22 (1993) +A1,A2 Class A GB 9254 (1988) EN 55024 (1998) IEC 61000-4-2 (1995); EN 61000-4-2 (1995) IEC 61000-4-3 (1995); EN 61000-4-3 (1996) IEC 61000-4-4 (1995); EN 61000-4-4 (1995) |
| Supplementary Information: | |
| The product herewith complies with the requirements of the Low Voltage Directive 73/23/EEC and the EMC Directive 89/336/EEC and carries the CE marking accordingly. | |
| Tested with Hewlett-Packard Co. products only. | |
| Roseville, May 17, 1999 | |
|  | |
| Grant Marten, Product Regulations Manager | |
| European Contact: Your local Hewlett-Packard Sales and Service Office or Hewlett-Packard GmbH, Department TRE, Herrenberger Strasse 130, D-71034 Böblingen (FAX:+49-7031-14-3143). | |



Australia. This equipment complies with Australian EMC requirements.

Canada. Complies with Canadian EMC Class-A requirements.

Japan: VCCI Class 1.

この装置は、情報処理装置等電波障害自主規制協議会（VCCI）の基準に基づくクラスA情報技術装置です。この装置を家庭環境で使用すると電波妨害を引き起こすことがあります。この場合には使用者が適切な対策を講ずるよう要求されることがあります。

Korea: RRL Statement.

사용자 안내문 : A 급기기

이 기기는 영우용으로 전자파 적합등록을 받은 기기 이오니, 판매자 또는 사용자는 이점을 주의하시기 바라며, 만약 잘못 구입하셨을 때에는 구입한 곳에서 비영우용으로 교환하시기 바랍니다.

Taiwan: Class A.

警告使用者：這是甲類的資訊產品，在居住的環境中使用時，可能會造成射頻干擾，在這種情況下，使用者會被要求採取某些適當的對策。

Chinese Safety Statement:

HP 网络产品使用安全手册

使用须知

欢迎使用惠普网络产品，为了您及仪器的安全，请您务必注意如下事项：

1. 仪器要和地线相接，要使用有正确接地插头的电源线，使用中国国家规定的220V电源。
2. 避免高温和尘土多的地方，否则易引起仪器内部部件的损坏。
3. 避免接近高温，避免接近直接热源，如直射阳光、暖气等其它发热体。
4. 不要有异物或液体落入机内，以免部件短路。
5. 不要将磁体放置于仪器附近。

警告

为防止火灾或触电事故，请不要将该机放置于淋雨或潮湿处。

安装

安装辅助管理模块，请参看安装指南。

保修及技术支持

如果您按照以上步骤操作时遇到了困难，或想了解其它产品性能，请按以下方式与我们联系。

如是硬件故障：

1. 与售出单位或当地维修机构联系。
2. 中国惠普有限公司维修中心地址：
北京市海淀区知春路49号希格玛大厦
联系电话：010-62623888 转 6101
邮政编码：100080

如是软件问题：

1. 惠普用户响应中心热线电话：010-65645959
2. 传真自动回复系统：010-65645735



© Copyright 2014
Hewlett-Packard Company
8/99
Manual Part Number
5969-3466

