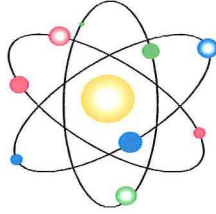


SERVICE



PHYSICS

ESCA HAWK FOR WINDOWS 7 – Ver7s



First Start

- Program installation
 - XP
 - Win 7
 - Instrument setup
 - Calibration
- Capturing data
 - Recipes
 - MRS Tables
 - Experiments
 - Database basics
 - ESCA Control Panel
 - Test and build MRS Table
 - Run MRS Table
- Stand-alone analysis
 - Area measurement
 - Peak fitting
 - Composition tables
 - Reports
- Export
 - EXCEL
 - VAMAS
 - Txt
- Import VECTRA DOS

*Service Physics Inc.
20332 Empire Ave
Suite F2
Bend OR*

*Version V7s
Sept 2013*

Welcome to Hawk software for XP and Windows 7

The hawk pictured in our literature was Photographed about 100 yards form my front door. It was perched at the very top of the tree in the background. The picture is about 1 second from lift-off. It was a very luck shot!

The software included has evolved over about 16 years. We have attempted to maintain current technologies from Windows NT through Windows 7. The next step will require a departure from the current C++/VB6 code base. We have migrated from the GPIO interface for the instrument control to USB 2 and from GPIB for motion control to a complete new motion control with Ethernet interface.

Plans are now being set in place for another major step forward. As the hawk is known for its vigilance we also are always watching for new technologies to conquer and integrate into our products.

Bob Chaney
President
Service Physics

First Start is an overview of the Hawk suite that is designed to provide the basic operation of the various components. This will allow the new user to get started and to be productive. To discover the next level of operations please refer to the detailed Software Manual.

PROGRAM INSTALLATION on win7 computer.

Preparation

All other programs need to be shutdown.

First install win 7 compatible support for any motor controllers used with the system. If this is a 6K4 installation you need to install Motion Planner and use the new RS Joy stick.

Systems that use the USB adaptor remove the USB cable that controls the ESCA from the computer before starting the installation.

Compatibility setting ,Installation and running of application in Windows 7

If installing on Windows 7 use the following Compatibility mode for all program installations and the first time each application is started. See detailed installation steps in next section.

This mode of installation must be used to run the setup.exe file that installs the program and the first time each application is run. To set the Compatibility do the following procedure:

COMPATIBILITY PROCEDURE

1. Right click the setup or program file and choose the Properties menu item.
2. In the Properties dialog select the Compatibility tab.
3. Check the box: "Run this program in compatibility mode for:"
4. Select the "Window XP (Service pack 3)" option in the list.
5. Select "OK" to close the dialog.

Use this procedure to run the setup.exe file on the CD. Then after the program is installed go to Start>Computer>(Computer name)C:\Program Files(x86)\Esca Hawk7.

Run the above Compatibility setting procedure for each of the following applications

ESCA Hawk GU(or EU, orBU).exe
Analysis7.exe
StartHawk7GU(orEU, orBU).ese
StartHawkA7.exe
DpViewer.exe
DOS Import win 7.exe
(opt) SixKWiz.exe
(opt)TestJoystick.exe

Run StartHawk7(GU or EU or BY) or StartHawkA7 if only Analysis is installed. Follow registration instructions.

Installing the Applications on the computer running the ESCA

On new installations install all support programs that are included in the folder with the ESCA Hawk instrument program. On an upgrade you may need to upgrade some support programs for win 7.

The installation package is found in the ESCA Hawk7 (BU, GU or EU) V7.X.X folder on the CD. If installing on Windows 7 use the above Compatibility procedure to select and run the setup.exe file. If loading on XP use normal procedure to select and run setup.

1. During the installation of library files you may be informed that a newer file is found, would you like to keep it, reply YES.
2. If you receive a message that an error occurred please note the exact message and call or email the message to Bob Chaney at Service Physics.
3. Open the Windows Start Menu, select All Programs and find the "ESCA Hawk7" folder. Open the "ESCA Hawk7" folder and select the ESCA Capture application. If using Windows 7 right mouse click to check Compatibility mode setting. Then start the program.
4. When the application starts you will receive a Registration Dialog box. E-mail the number listed in the dialog to Barb@sphysics.com and Bob@sphysics.com. One of us will return a serial number that will unlock you program. Please provide your name and the name of the institution owning the Instrument that holds the primary license. When the serial number is returned you can copy and paste the Serial number into the dialog box and continue.
5. Plug in the USB cable for the instrument communication. Follow driver installation wizard to update the USB drivers. The win 7 drivers are separate from the XP drivers. There are separate drivers for win 7 – 32 bit and win 7 -64 bit. All drivers are in the USB driver folder.

Standalone ESCA Hawk Analysis 7

The installation package is found in the Analysis Hawk7 V7.03.04 folder on the CD. If installing on Windows 7 use the above procedure to select and run the setup.exe file. If loading on XP use normal procedure to select and run setup.

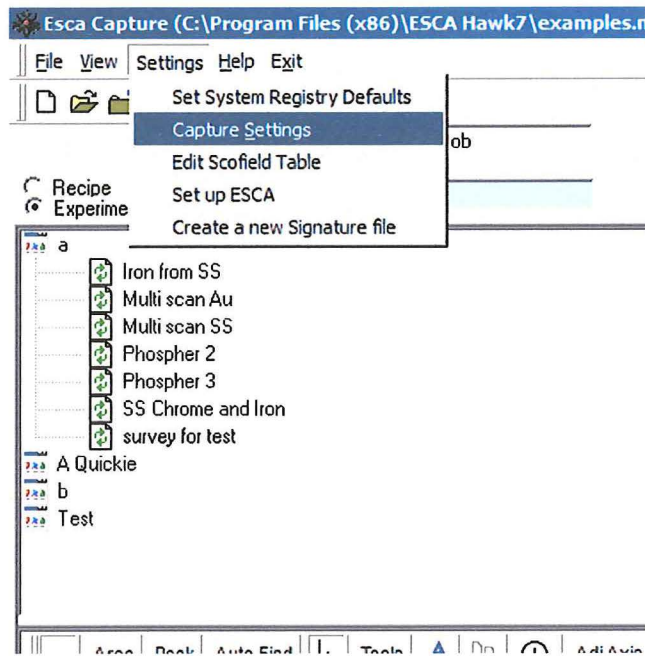
1. During the installation of library files you may be informed that a newer file is found, would you like to keep it, reply YES.
2. If you receive a message that an error occurred please note the exact message and call or email the message to Bob Chaney at Service Physics.
3. Open the Windows Start Menu, select All Programs and find the "ESCA Hawk7" folder. Open the "ESCA Hawk7" folder and select the ESCA Analysis application. If using Windows 7 right mouse click to check Compatibility mode setting.

4. Start application. E-mail the number listed in the dialog to Barb@sphysics.com and Bob@sphysics.com. One of us will return a serial number that will unlock you program. Please provide your name and the name of the institution owning the Instrument that holds the primary license. When the serial number is returned you can copy and paste the Serial number into the dialog box and continue. You will be asked to restart the program.

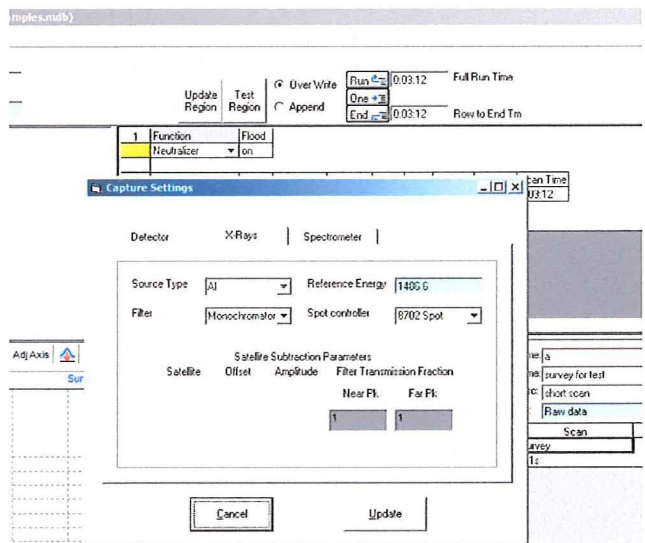
Instrument Setup (This section is not required for stand-alone Analysis)

Establish initial configuration to match the software to the hardware.

Select the Settings Menu form the ESCA Capture tool bar. Select the Capture Setting tool from the menu.



Capture Setting Dialog – review all settings.



Detector Tab

Dither
 No check mark 2401
 Check mark 2503

Signature
 Remove check to take reference spectrum. Replace check to use signature correction.

Horizontal Linearization not available.

Signature Path. Location of Sig.txt file.

X-rays Tab

Spot Controller
 Match to gun type and X-ray Controller model.

Spectrometer Tab

Spectrometer Power Supply
 Match to power supply model
 Select range for 8724

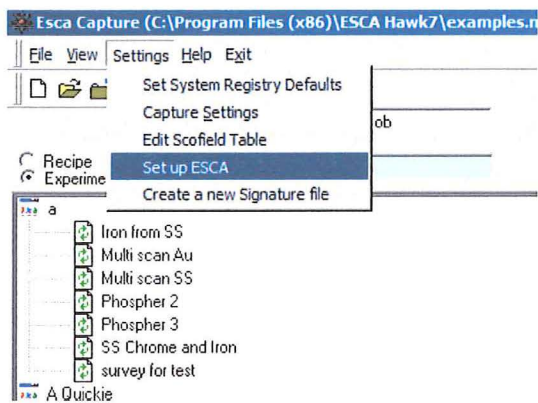
Lens Type
 Use for documentation only

CALIBRATION (This section is not required for stand-alone Analysis)

Conversions from original Surface Science Software

Step 1. Rough adjustment of PassEnergy so automatic calibration will find Au 4f peaks.

The “Set up ESCA” utility provides tools that are used to troubleshoot and calibrate the ESCA system. The “Set up ESCA” utility is started from the Settings Menu on the main toolbar.

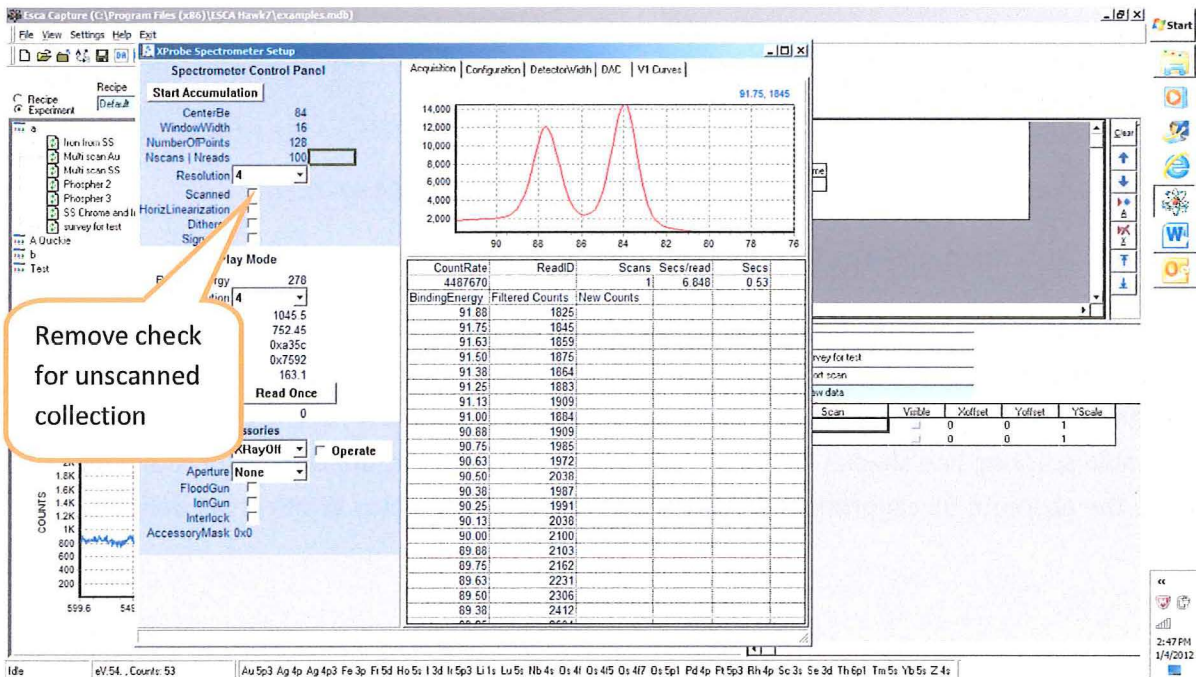


Open Set up ESCA utility

Set Accumulation parameters

Center BE	84
Window Width	auto fill
Number of points	128
NScans NReads	100
Resolution	Res4
Scanned	Unchecked

Start Accumulation



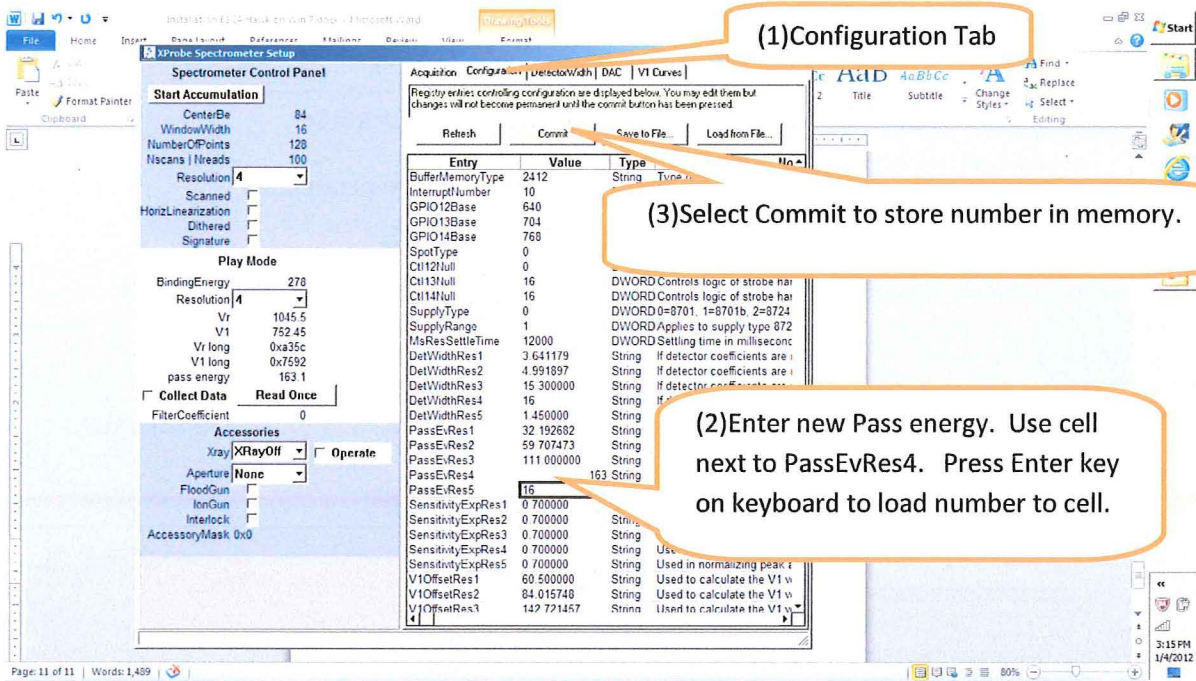
Select “Start Accumulation”. Adjust BE to center spectrum if necessary.

Estimate the center of the 4f 7/2 peak when scan is completed.

Cursor will provide a readout of BE at the upper right corner of spectrum display.

Make a correction to the pass energy to set the peak to 84 eV. This can be accomplished by computing the shift required to move the peak to the correct position. If the peak is 2 eV high then the pass energy needs to be increased by 2 eV. Increase pass-energy to lower peak.

To make the change for Resolution 4 change parameter PassEvRes4. Select the Configuration Tab in the right hand pane to expose the Configuration table.



Select the Acquisition Tab and retest the correction. Set Peak to 84 +/- 0.5eV.

Repeat for Res 3, Res2 and Res 1.

Step 2. Run Detector Width and DAC auto calibration. This provides both detector width and BE calibration. On a new setup it is a good idea to run the Detector width, DAC and then re-run the Detector Width a second time to finalize the Absolute BE. This is necessary to provide reasonable scanned line shapes for the DAC calibration. However, the DAC calibration will change the absolute BE calibration so the second run of the Detector Width is needed.

Change the table to the settings shown below. Be sure the Operate check box is checked in the lower left block of setting titled Accessories.

Spectrometer Control Panel

Start Accumulation

- CenterBe: 85.82
- WindowWidth: 4.991897334
- NumberOfPoints: 128
- NScans | Nreads: 10
- Resolution: 2
- Scanned:
- HorzLinearization:
- Dithered:
- Signature:

Play Mode

- BindingEnergy: 278
- Resolution: 2
- Vr: 1148.775
- V1: 592.825
- Vr long: 0xb37f
- V1 long: 0x5ca1
- pass energy:

Collect Data Read Once

FilterCoefficient: 0

Accessories

- Xray: XRay400 Operate
- Aperture: None
- FloodGun:
- IonGun:
- Interlock:
- AccessoryMask: 0x0

Acquisition | Configuration | DetectorWidth | DAC | V1 Curves

84.57, 27655

Please install a clean Au sample, turn on Xray gun to 600 spot, push start button when ready.

	Res 2	Res 3	Res 4
Secs unscanned mode:	30	15	15
Scans for pe adjustment:	2	1	1

Control Panel

- CenterBe: 85.82
- WindowWidth: 991897334
- NumberOfPoints: 128
- NScans | Nreads: 50

Mode

- BindingEnergy: 278
- Vr: 1148.875
- V1: 592.875
- Vr long: 0xb383
- V1 long: 0x5ca3
- pass energy: 59.707473

Read Once

FilterCoefficient: 0

Accessories

- Xray: XRay400 Operate

Acquisition | Configuration | DetectorWidth | DAC | V1 Curves

220,000
200,000
180,000
160,000
140,000
120,000
100,000
80,000
60,000
40,000

88 87 86 85 84

Abort Please install a clean Au sample, turn on Xray gun to 600 spot, push start button when ready.

	Res 2	Res 3	Res 4
Secs unscanned mode:	30	15	15
Scans for pe adjustment:	2	1	1

Error

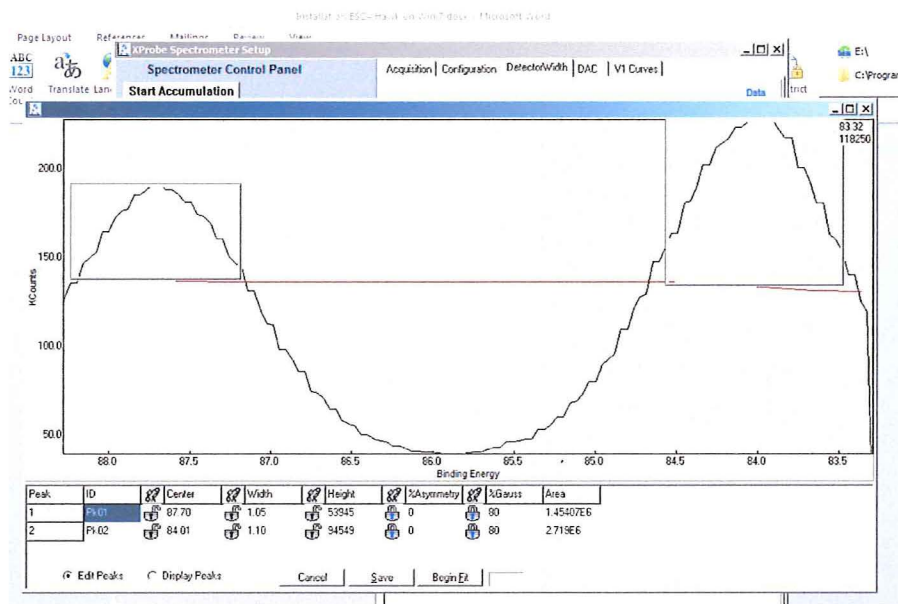
Auto peak search failed to find two peaks. Would you like to try to fit the peaks yourself?

Yes No

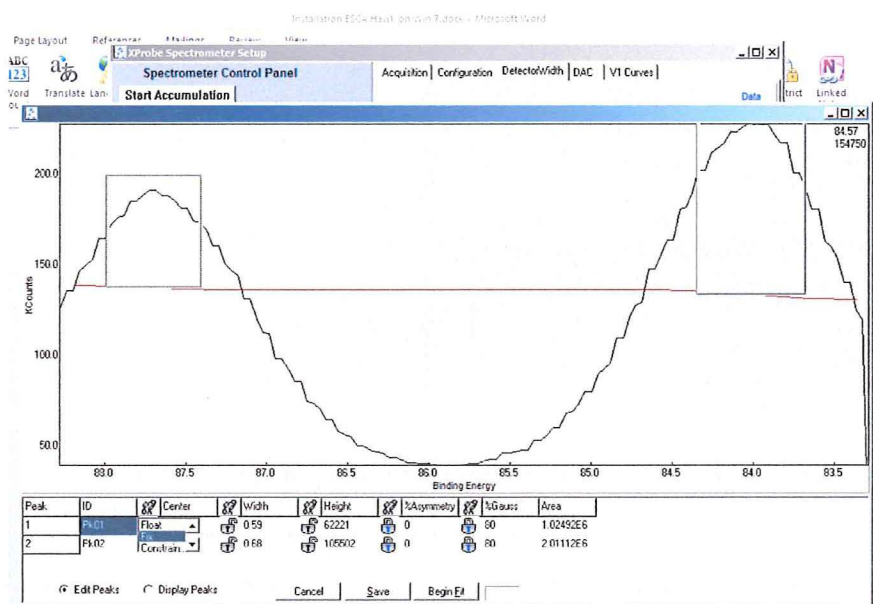
The error message will occur if the automated measurement of peak separation failed.

When the Detector Width auto calibration attempts to measure the separation between the two peaks for Res 2 it sometimes fails. This is a result of the two peaks overfilling the window. Accept the offer to provide a manual measurement.

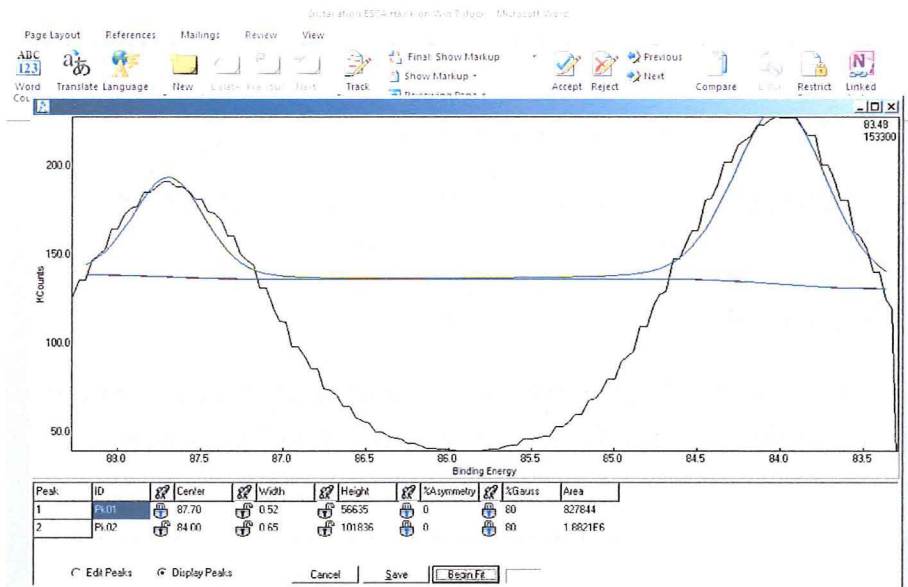
The peak fit tool is displayed. Click near the center of the peak for both peaks. Boxes show the default width and height above the default baseline. Notice the problem is the peak curve has not returned to the correct baseline at the edge of sides of the window.



Click and drag the sides of the box to the half-height points, with respect to the drawn base line, and increase the height of the left peak as shown. Click on the Begin Fit button. If you need to try again turn on the Edit Peak radio button.



The final result should look like the curve fit below. Select the save button to pass the peak spacing to the Detector Width program.



Once you are pasted the Res 2 calibration the rest of the calibration should run fine. You can review the adjustment log in the dialog box.

The DAC calibration uses the same procedures to establish the spacing between the Cu 2P3/2 and Cu 2S lines.

Step 3. Run Calibration of spectrometer Lens focus voltage (Requires computer control of V1).

A detailed Service Note is available that covers x-ray gun spot settings, Crystal alignment, lens alignment and detector voltage adjustment. We recommend a complete alignment be performed. The details of the V1 calibration is covered in the service note.

The V1 Curves Tab provides a utility that runs curves of V1 verses Signal strength. The curves are run at two Binding Energies for all four resolutions. These curves help determine the V1 voltage that optimizes the count rate at the two Binding Energies. From these values the optimum Slope and Intercept parameters that define the relation between V1 and Vr (retardation voltage) can be determined. These parameters are then saved in the registry.

CAPTURING DATA

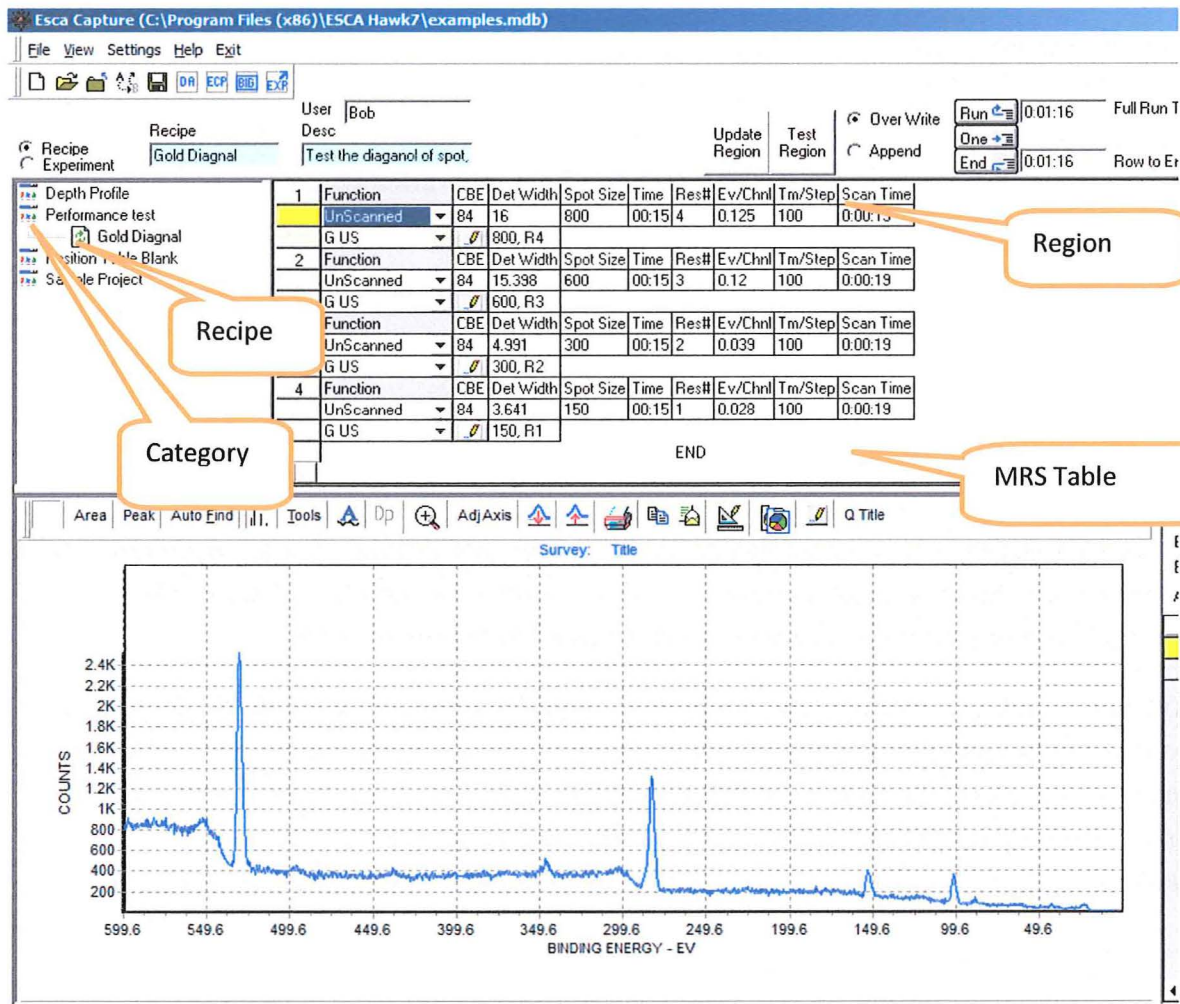
Recipes and MRS Tables

The parameters that define a spectrum can be saved as a **REGION**

A multi-row Spreadsheet with a column for each **REGION** is known in all Surface Science Software as an **MRS (Multi Region Scan) TABLE**. We keep this concept.

We can save the **MRS TABLE** as a **RECIPE**.

For convenience we can group a set of **RECIPES** in **CATEGORIES**. **CATEGORIES** have no intrinsic meaning in the software and are simply a means for the user to group **RECIPES** in blocks that may have meaning in the flow of their work.



Points to remember:

You may save one or many region specifications in an MRS Table. You may want to use this specification exactly as saved or just as a convenient starting point. You are free to do either. If you really want some recipes not to be changed then you may want to establish a category for all such recipes.

If you have a large MRS table and decide you want to have another that is modified from the first use SaveAs, modify the clone and then save the modified result. The Save and SaveAs function in the File menu operate only on Recipes and Categories.

Right above the Recipe Tree are two buttons. "Experiments" and "Recipes". If you select Experiments you will have a tree of previous Experiments. These are completed groups of spectra. You can select an old Experiment and the MRS Table that was used to capture the group of spectra will be loaded. You can then re-run the exact experiment from the recovered MRS Table. This can be a MRS table that was built from a Recipe but was modified before it was run. i.e. This is the only existing MRS table of its kind.

Experiments

Experiments are collections of captured data. Before you can start the capture process you must name the Experiment. This is equivalent to specifying the file name in the Surface Science Software. You must also specify a Project. This structure is equivalent to defining a folder in which to store Experiments. This tree of Projects and Experiments were displayed above in the Experiment Mode. The entry box for the Project and Experiment information is shown below.

Proj Name: a
 Exp Name: survey for test
 Exp Desc: short scan
 Analysis: Raw data

Scan	Visible	Xoffset	Yoffset	YScale
Survey	<input type="checkbox"/>	0	0	1
C 1s	<input type="checkbox"/>	0	0	1

49.6

8:45 AM
1/5/2012

7 Os 5p1 Pd 4p Pt 5p3 Rh 4p Sc 3s Se 3d Th 6p1 Tm 5s Yb 5s Z 4s

Points to Remember:

If you try to capture data and have not changed the information in the Proj Name or Exp Name boxes you will be warned. You will then have the choice to change one or both names, collect new data that will overwrite the old data, or append additional data. Appending new data will create additional regions. These regions can be reruns of existing lines in the MRS table or new regions added to the MRS table. If the new data is taken with an existing region then the original and new data can be summed together to improve S/N.

The data acquired during the capture process is saved to the Database during the scanning process. There is no provision for additional save operations. All subsequent review or analysis operations are performed on copies of the original data. There is no possibility to corrupt or altering the original data except for the above mentioned collection of new data with existing Experiment and Project names. A warning is always provide before this can take place.

Databases

The Recipes, Experiments and other data associated with the captured data is stored in a Windows Access database. These files have the .MDB extension. This provides a convenient and powerful method of storing information that has complex relationships. This will become more evident as you become familiar with the Data Reduction, Export and Editing functions available. For now just think of the Database as a folder with some really helpful tools inside that will help you find the information you need. Think of the Experiment Names as the tag you use to find the data you took with an MRS table. (The MRS table may have only one spectrum!) There is no second structure for single spectra in the Database.

Taking a Spectrum

There are two methods for acquiring a spectrum. The ESCA Control panel or the MRS Table. The ESCA Control panel has no means for storing the acquired spectrum. It is a tool for previewing and testing acquisition conditions. The MRS table is a collection of region specification that are run in a batch mode and saved directly to the Database. The ESCA Control Panel and the MRS Table work together through the "Test Region" and "Upload Region" buttons.

The ESCA control Panel

The screenshot shows the ESCA Capture software interface. The main window is titled "ESCA Capture (C:\Program Files (x86)\ESCA Hawk7\examples.mdb)". The interface includes a menu bar (File, View, Settings, Help, Exit), a toolbar, and a main control area. The control area is divided into several sections:

- Experiment Section:** Includes fields for "Recipe" (Gold Diagonal), "Experiment" (Gold Diagonal), and "User" (Bob). A description field contains "Test the diagonal of spot."
- Table Section:** A table with columns: Function, CBE, Det Width, Spot S. It lists four rows of data.
- ESCA Control Panel Section:** Contains "Spectrometer Controls" (Flood Gun, Ion Gun, X-ray Gun, Operate), "Scan Param" (CBE, Spot Size, Res#, Cap T), "Scans" (Scans, Det Width, Ev/Chnl, Tm/Step), and "Count Rate" (START, Abort, Exit).
- Graph Section:** A plot showing "COUNTING ENERGY - EV" on the x-axis (ranging from 299.6 to 49.6) and a blue line representing the data.
- Table Section:** A table with columns: Scan, Visible, Xoffset, Yoffset, YScale. It lists two rows of data.

Orange callout boxes highlight specific areas:

- "Accessory controls" points to the "ESCA Control Panel" section.
- "Initial Parameters (start-up)" points to the "Scan Param" section.
- "Capture Parameter controls" points to the "Scans" section.

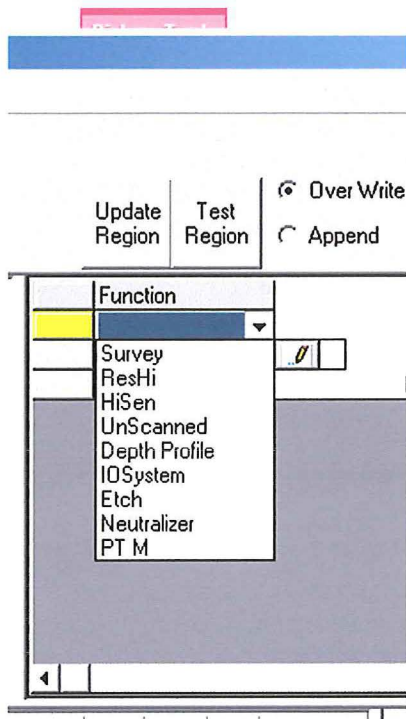
The Capture Parameters are defined by the 8 controls in the control frame. The titles above the entry boxes will change for scanned or unscanned operation. The Scanned configuration is set by clicking the check box above the "Scans" window. If the box background color is light blue then it is not activated as an entry box (information only). In the Unscanned mode the "Cap T" label above the entry box is a button. You can alternate between total Capture Time and Averaging Time. In Averaging Time mode the incoming data is filtered so the oldest data is waited by $e^{-t/\tau}$. τ is the time constant displayed in the window. The minimum time constant is 0.5 seconds. The values entered take effect when the Start button is selected.

The Accessory controls only affect the accessories when the control panel is open. They change the state of the accessory immediately if a spectrum is not being collected and are deactivated during capture.

The "Initial Parameter Control" allows the user to define the initial state of the parameters as the panel is opened.

Testing and building the MRS Table

Functions:



Functions that provide default settings

Survey –Wide scan, Res 4, 800 spot

ResHi - Scan for peaks of one element
Res 1or2, 150 or 300 spot

HiSen - Scan for trace elements
Res 3 or 4 600 or 800 spot

UnScanned - Special uses

Depth Profile – setup DP regions and etch conditions

IO System – Aperture x-rays stand-by

Specify the type of Region with the Function drop-down window.

The MRS tools provide a variety of methods to create a region. At the far right of the MRS table are a set of buttons that create a blank region, delete a region and move regions to reorganize the table. Once a blank region is created you may choose a function that will create a region with default values that are typical for the function. You can then finalize the settings by changing the values in the cells necessary to meet your requirements. This is often a matter of changing just the BE and Number of scans.

Below is a table with four regions customized to look for Pt on a silicon dioxide substrate.

The screenshot displays the ESCA software interface with the following components:

- ESCA Control Panel:** Includes Spectrometer Controls (Flood Gun, Ion Gun, X-ray Gun Operate), Aperture (None), and Initial Parameters (Last Used, Default, Set Current as Default). It also features a table for Scans and Count Rate.
- Scan List Table:** A table with columns: Update Region, Test Region, Over Write, Append, Run, One, End. The main table has columns: Function, LBE, Wnd/Width, Spot Size, Scans, Res#1, Ev/Step, Tm/Step, Scan Time.

Function	LBE	Wnd/Width	Spot Size	Scans	Res#1	Ev/Step	Tm/Step	Scan Time
1 Survey	0	1000	800	1	4	1	100	0.0048
G Survey 1000	∅	Survey						
2 Function	CBE	Wnd/Width	Spot Size	Scans	Res#1	Ev/Step	Tm/Step	Scan Time
ResHi	20	300	1	2	0.065	100	0.0048	
G HR R2	∅	C 1s						
3 Function	LBE	Wnd/Width	Spot Size	Scans	Res#1	Ev/Step	Tm/Step	Scan Time
HiSen	90	20	800	50	4	.4	100	0.0922
G Sen R4	∅	Pt 5s						
4 Function	CBE	Del Width	Spot Size	Time	Res#1	Ev/Chnl	Tm/Step	Scan Time
Unscanned	84	3.641	150	20.00	1	0.028	100	0.2500
G US	∅	Si 2p						
- Plots:** A large plot on the left shows a peak at 274.00 eV with a count of 64153. A smaller plot on the right shows peaks at 152.36 eV, 101.28 eV, 88.4 eV, and 22.77 eV.
- Scan List Table:** A table with columns: Scan, Visible, Xoffset, Yoffset.

Scan	Visible	Xoffset	Yoffset
Survey	0	0	0
C 1s	0	0	0
- Metadata:** Proj Name: Pt Cat, Exp Name: process 1214_8, Exp Desc: look for trace Pt, Analysis: Raw data.

Points to remember:

The Region Label cell is located below the window width cell. This cell provides a label that will be substituted for the default Regn1, Regn2 etc. Notice in the Scan List (Lower right corner of the application window) these labels have been used in the Scan column. In the Analysis Application the labels are used in auto labeling spectra. If the label is a spectral line ID the DP viewer will look up the crosssection in the Scofield table.

The Unscanned Function provides the actual Detector Width for your reference.

The "Scan Time" includes an overhead time in addition to the actual data acquisition time.

Filling a blank region form the ESCA Control Panel

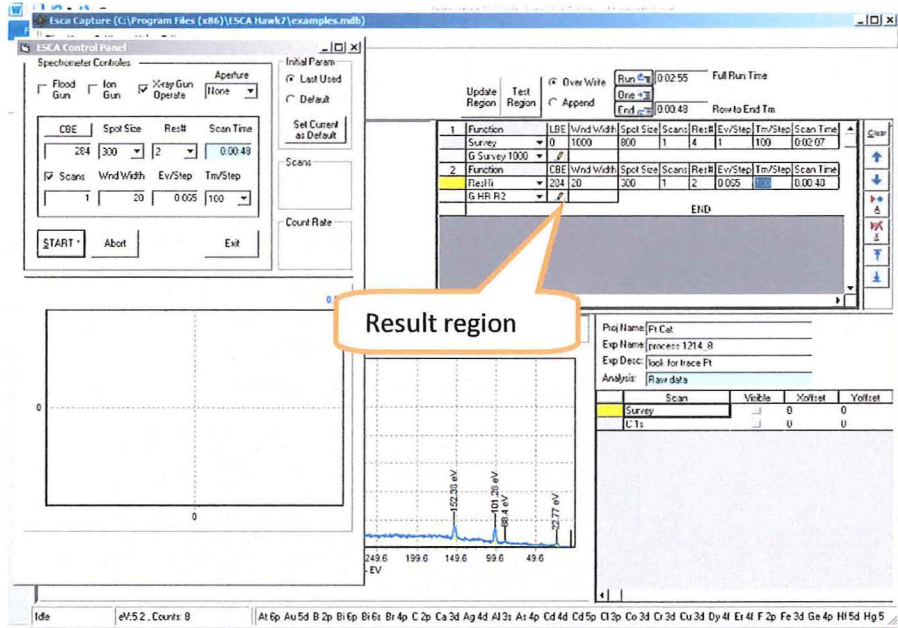
Select update region to create region with

Be sure blue active cell is in the same region as the Yellow active region

Function	LEE	Wind/Width	Spot Size	Scans	Rec	Ev/Step	Trn/Step	Scan Time
1 Function	0	1000	500	1	4	1	100	0:02:07
Survey								
G Survey 1000								
2 Function								

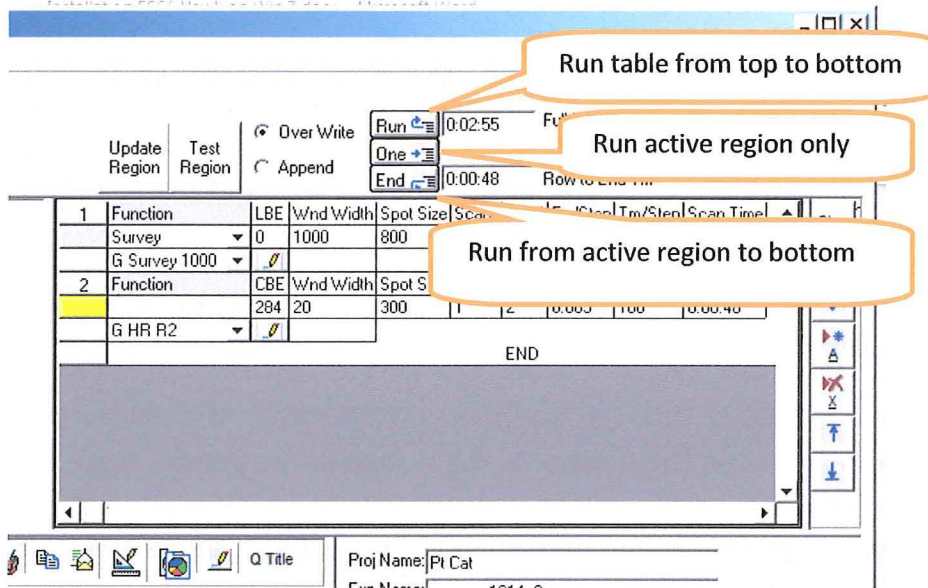
1. Add a blank region using the Add button
2. Setup the ESCA control panel and evaluate your parameter setting.
3. Click the "Update Region" button to load parameters into the empty region.
4. You can also update to an existing region. Be sure the Yellow region marker and blue active cell marker are in the same row. If the parameters transferred are not consistent with the function rules the Function name will be changed.

Result of Updating to a blank region



Any region can be tested by clicking on the block below the Region number to activate that region and then Clicking the "Test Region" button. The ESCA Control panel will open and start running the selected region. You may make changes in the ESCA Control panel and then "Update the Region" back to the MRS table.

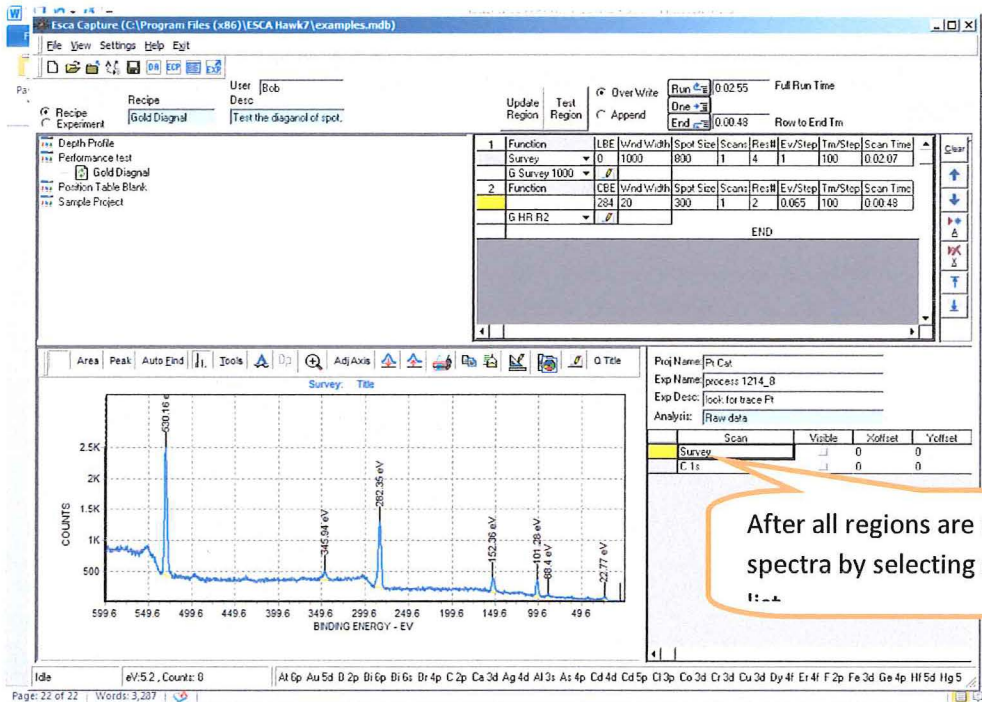
Running the MRS Table



Select any one of the start keys to run the MRS table.

Review Captured Data

Each region of the MRS table that was run will appear in the Scan List after all spectra are captured. You may review them by clicking on the activate button in the scan list. Multiple regions can be displayed at the same time by checking the box in the visible column.



Points to remember

The tools above the spectra are only available for review. Results of measurements can't be saved.

The cursor position and curve amplitude is displayed in the information box at the bottom of the application window.

You may copy a spectrum to the clipboard, print or save the graphic form of the spectrum using the icons in the spectrum tool bar

The icon, that is a blue A, can be used to label the spectrum. Click the icon. You will see a BE number with a short vertical line below the number in the middle of the graph. Move the cursor to the bottom end of the line. When you see the arrow become a hand, left click the mouse and drag the line. The number will reflect the BE of the new location. The label can also be moved. With the cursor on the label right click the mouse. A dialog opens that provides for input of a new label and formatting of the label.

STAND-ALONE ANALYSIS

Loading Data for analysis

From the file menu
Pick "Open Scan Source" to navigate the file structure.
Pick a previously used database from the list.

	A	B	C	D	E
1					

Load Data button

1. Select database

2. Find Experiment

3. To Load Data – select one

- a. Raw MRS (full list of regions)
- b. Single region
- c. Saved analysis

4. Click "Load Data button"

5. "Add Data" button is used to add a region from other experiments to loaded scan tables.

Experiment tree for selected database

Area measurement

Auto Find

Auto table

Assignment tool

Apply button

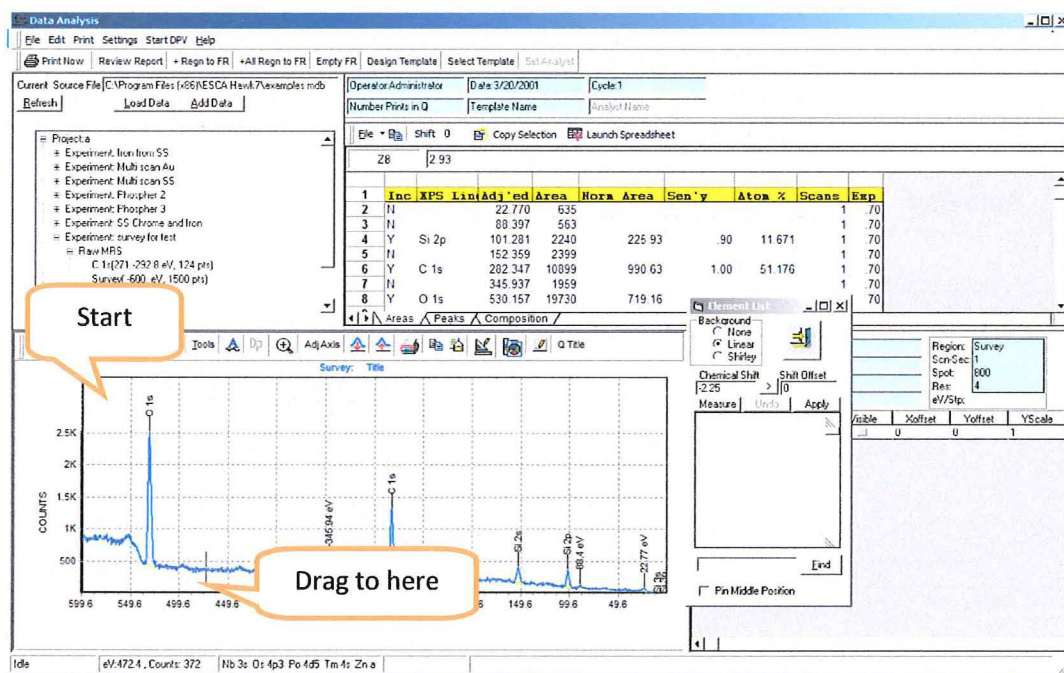
Candidate List

Marker

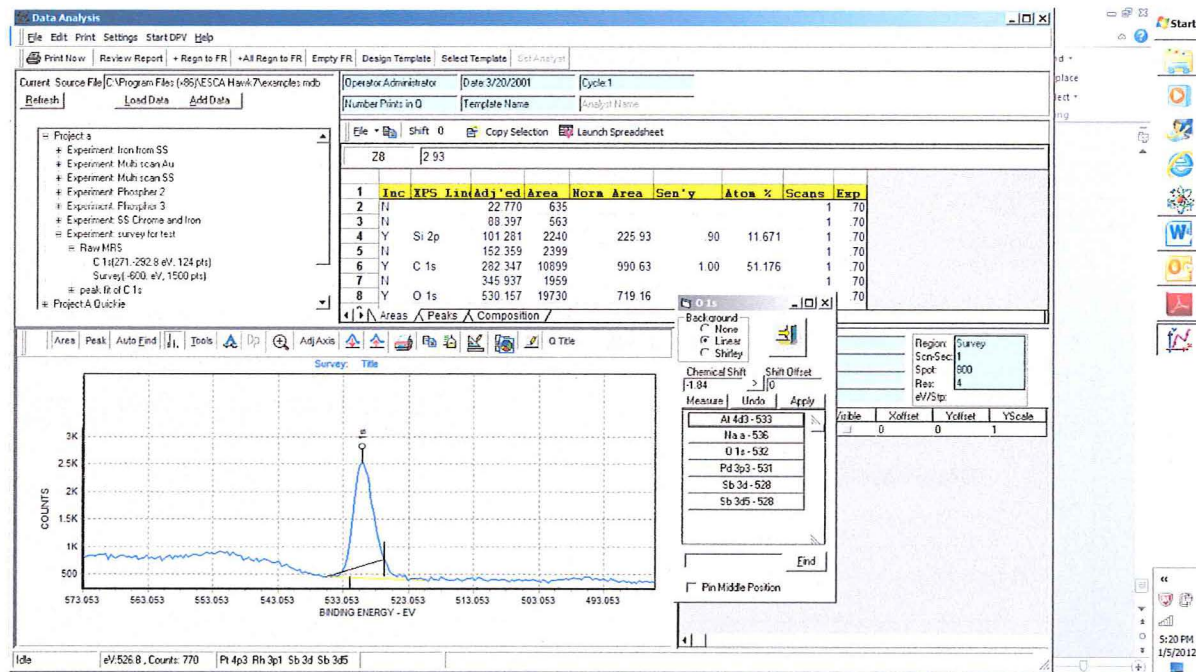
Tracker list follows cursor

Sequence to measure and identify peaks:

1. Click Auto Find tool. The Assignment tool will appear.
2. Activate peak for identification by clicking near the BE label above the peak.
3. Select a trial candidate form Assignment tool list.
4. Review the markers along the baseline to see if all peaks for the element are present.
5. Try other assignments if necessary.
6. If you wish to assign the ID symbols to all other peaks for the selected element click the "Apply" button. This aids in determining if you have accounted for all peaks in a complex spectra.
7. Repeat for another peak.



If you wish to expand the scale draw a box to outline the area you want to expand. To draw the box you click at the upper left corner and drag to the lower right. The graph will expand when you release the mouse button. To return to normal you reverse the direction of drawing the box.



Result of Expanding window.

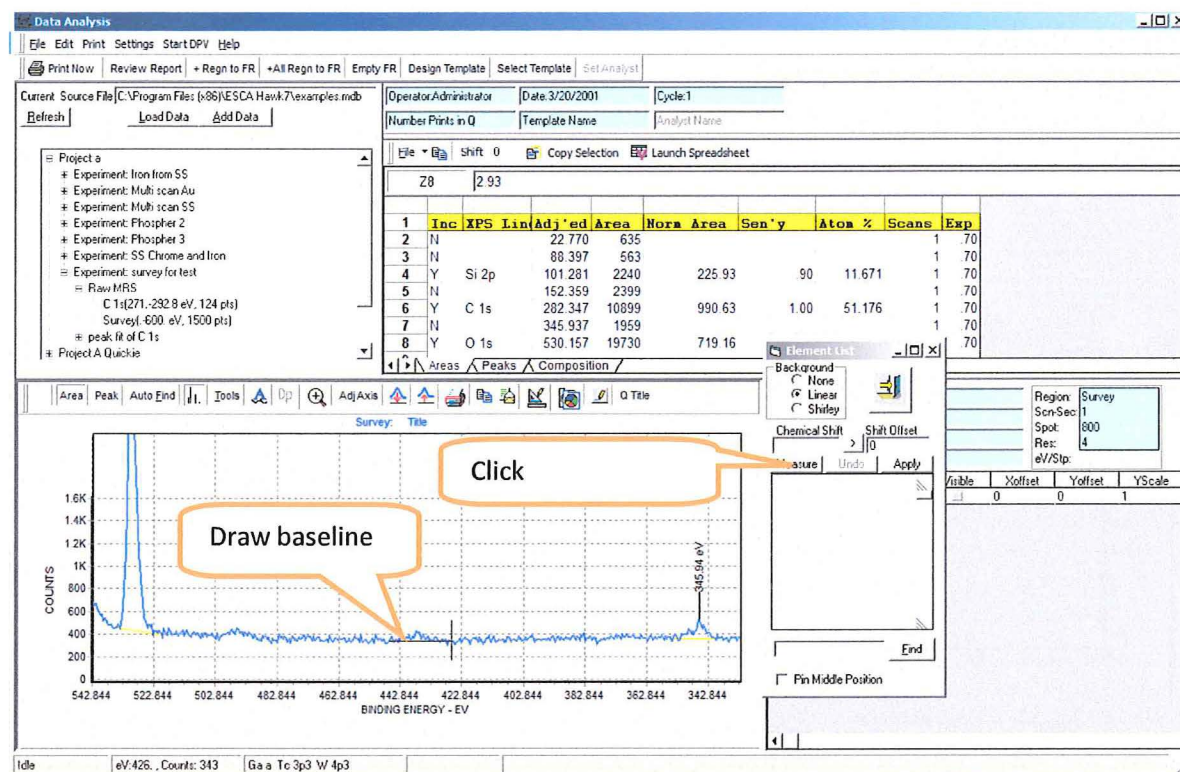
Adjusting or drawing the base line:

To adjust an existing base line:

1. Activate the existing base line. Place your mouse pointer between the end points of the existing baseline and click. A black line will appear next to the existing yellow base line.
2. Find the hot-spot where the existing baseline joins the peak curve. The mouse pointer will change from an arrow to a hand with the index finger as a pointer.
3. Left mouse click and drag the endpoint to a new location.
4. Repeat for the other end of the baseline if necessary.

This procedure can be used to create a new baseline. In this case you place the tip of the mouse pointer at a point on the curve where you wish to start drawing the baseline. Then you drag the baseline to a second point on the curve and release the left mouse button. This operation is used to make a new area measurement.

To enter the new Area measurement into the data table click on the "MEASUREMENT" button on the Assignment Tool.

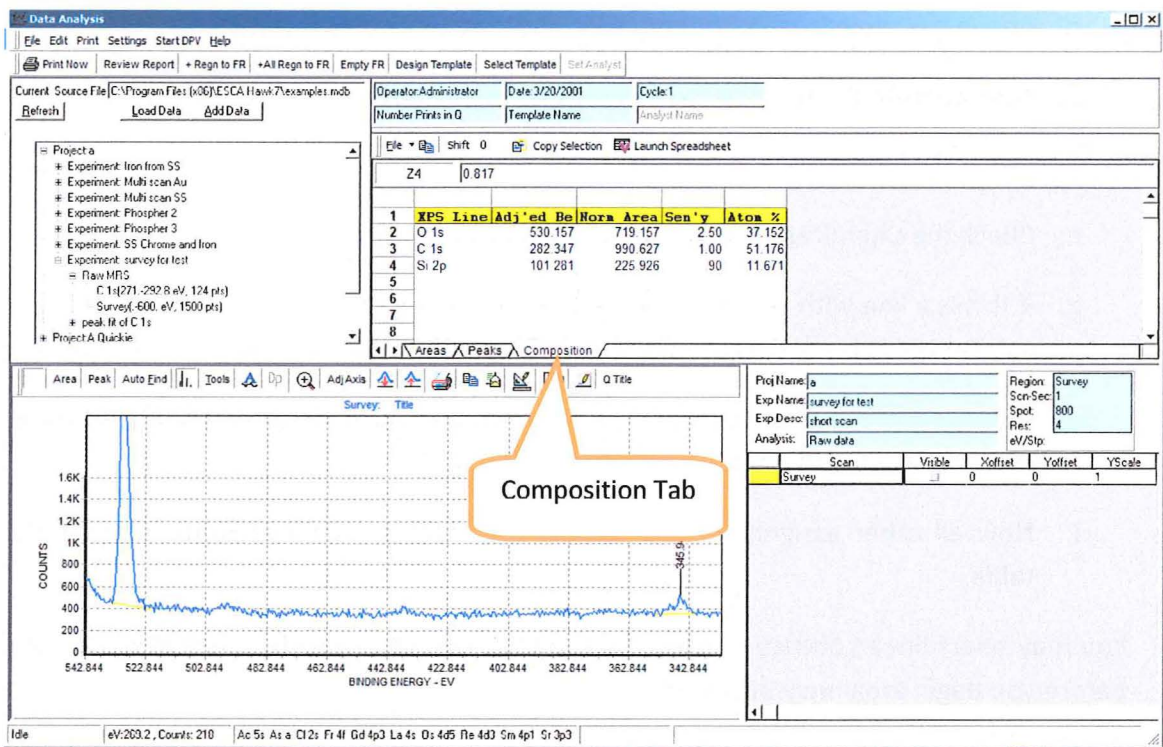


Points to Remember:

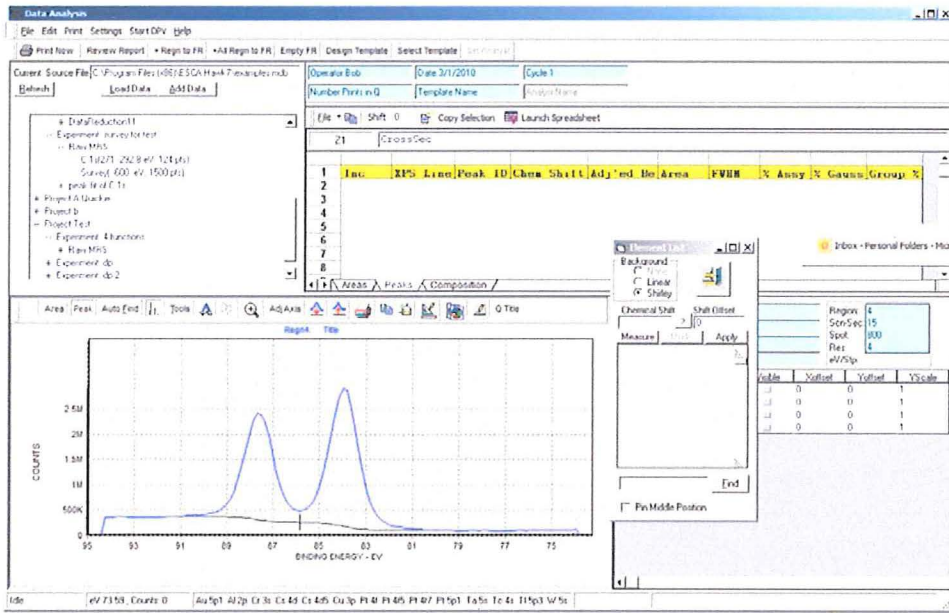
1. Area button on toolbar must be active and Assignment Tool must be present to make or change baselines.
2. The area and BE information is added to the data table by making a measurement.
3. Scofield information is added to the data table by making an Assignment from the candidate list.
4. The element list is filled from the Scofield table following range rules contained in Scofield table. If the spectrum is shifted so the Binding Energies don't fall within the Scofield table range then the Assignment table will not be valid. To avoid this problem:
 - a. Find a reference line with known Chemical or no Chemical Shift.
 - b. Determine the shift necessary to move the line to the correct BE.

- c. Above the table is an entry box titled Shift. Enter the shift value.
 - d. Now activate the peak so the element appears in the Assignment Table.
 - e. Select the Assignment
 - f. Check the Chemical Shift window at the top of the Assignment list.
 - g. If this is a line with no Chemical Shift and a value is displayed then click the Right arrow button between the Chemical Shift window and the Shift Offset Window.
 - h. If you know the Chemical shift and it is not correct then correct it by adjusting the Shift value in the box above the Data Table.
 - i. Now all other assignment will display the correct Chemical Shifts in the Data table.
5. You may select linear, Shirley or None for the base line. It is best to select the line style before you begin area measurements.
 6. The "None" base line option is useful in calculating the estimated uncertainty in the area measurement. The area in this case will be all counts under the peak, without baseline subtraction. The uncertainty is the square root of the total counts under the peak. This can be compared to the area between the peak and the baseline to determine the signal to noise of the measurement.

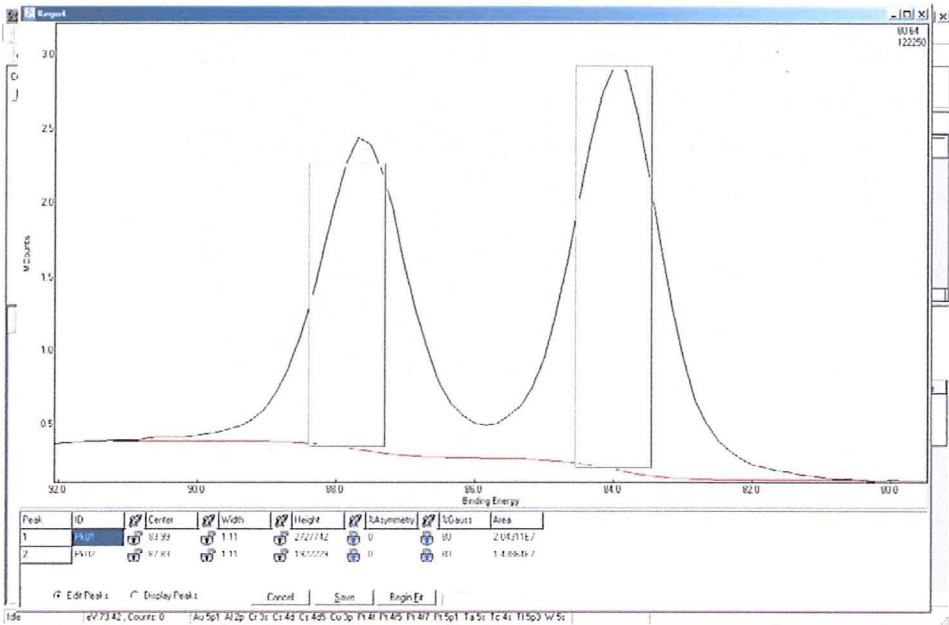
Composition Table



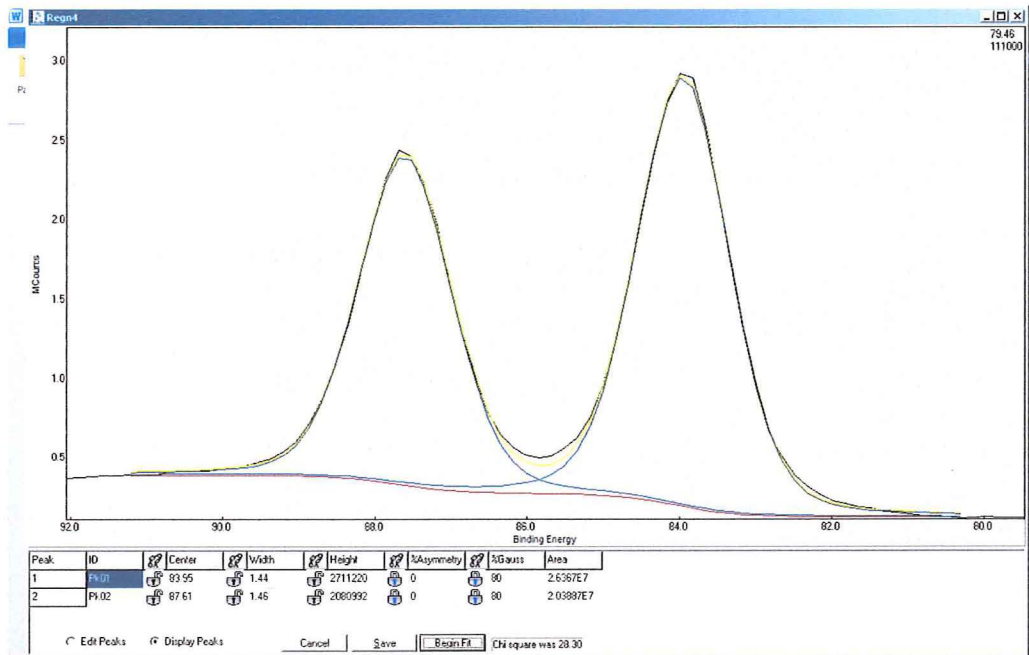
Selecting the Composition Tab below the Data Table provides a summary of the lines selected for the composition measurement. The selection can be modified by the placing an “N” in the first column of the Area Table to drop a peak or a “Y” to include a peak.



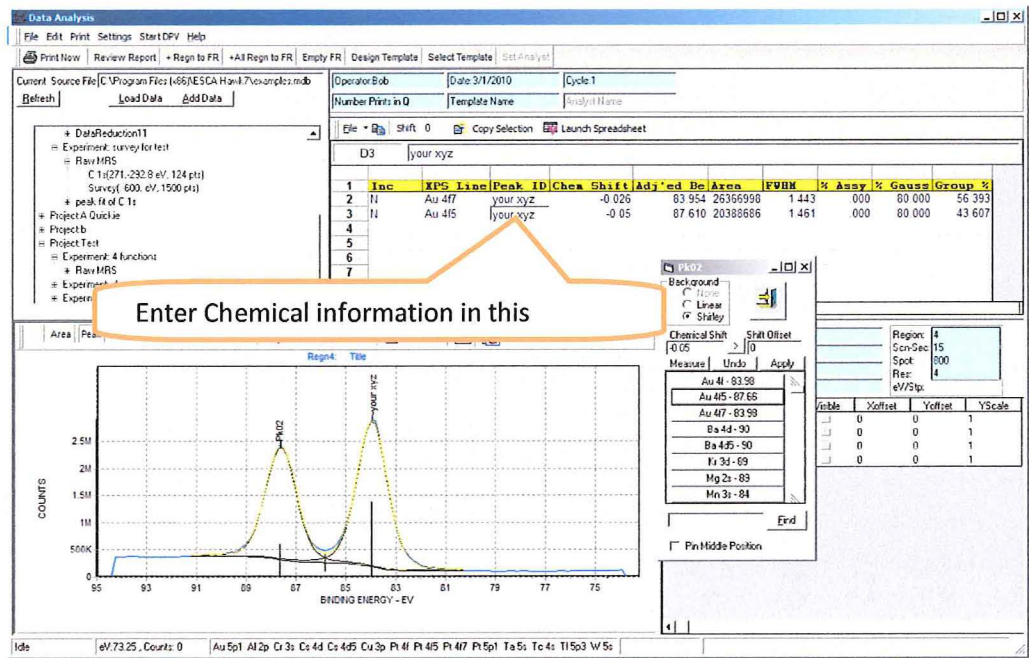
1. Select the Peak button in the Tool bar.
2. Draw the base line
3. Click Measure Button on Assignment Tool



1. Place "width boxes"
2. Select Begin Fit



Save will store results and return to the main window.



Assign elements or enter Peak ID information directly in the Data Table.

Reports

The output provided is extensive and covered in the manual. We provide here a brief description of the print out capabilities.

The printout is a subset of an embedded Report Generator purchased from Fast Reports. (FR)

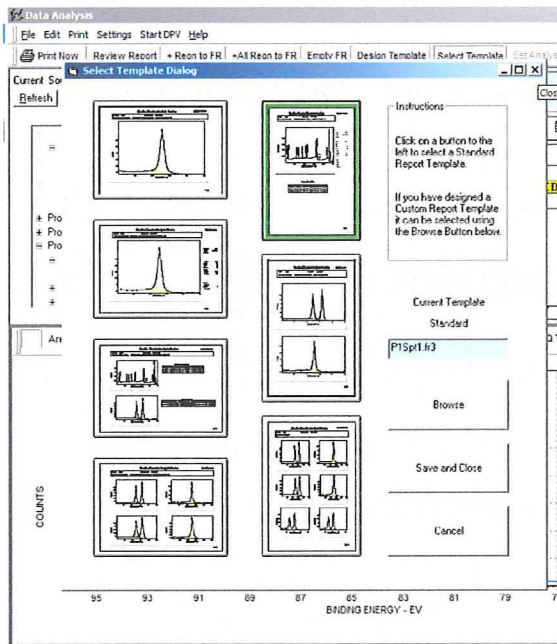


The tool bar controls the information passed to FR's. The steps to generate a printout are:

1. Perform any data analysis you wish to have reflected in the printout.
2. Select a template (far right button on tool bar)
3. Review Report (If you only want to print one spectrum you can skip this step)
4. Print

If you wish to work through a list of spectra you can either add them to the report after you have finished each spectrum using [+Regn to FR] or finish all regions in the region list and then select [+ All Regn to FR]. You can clear all regions placed in the FR using [Empty FR]. "Print Now" prints all Regions that have been added to the report.

Select Template



Templates can include:

Header with Lab Name and Logo, Project, Experiment and Description information.

Data collection parameters

Composition Tables

Peak Fit tables

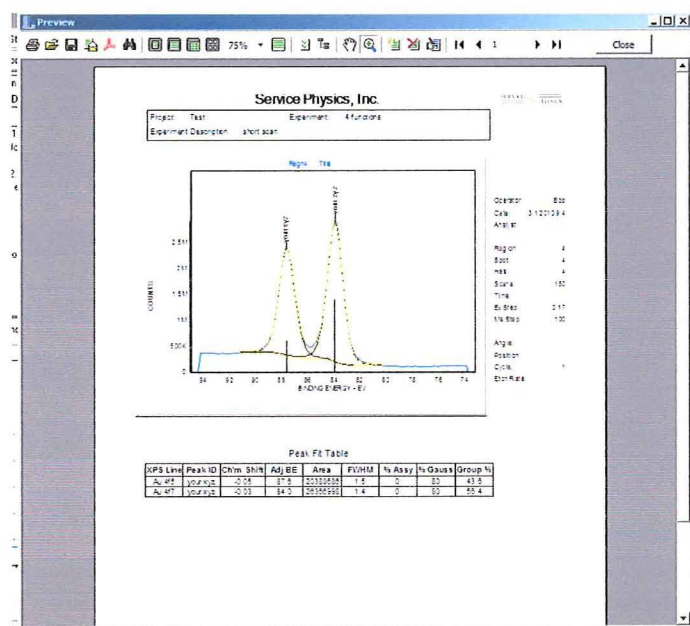
Figure descriptions

Individual titles for each spectrum

A template designer is includes for creating or modifying templates.

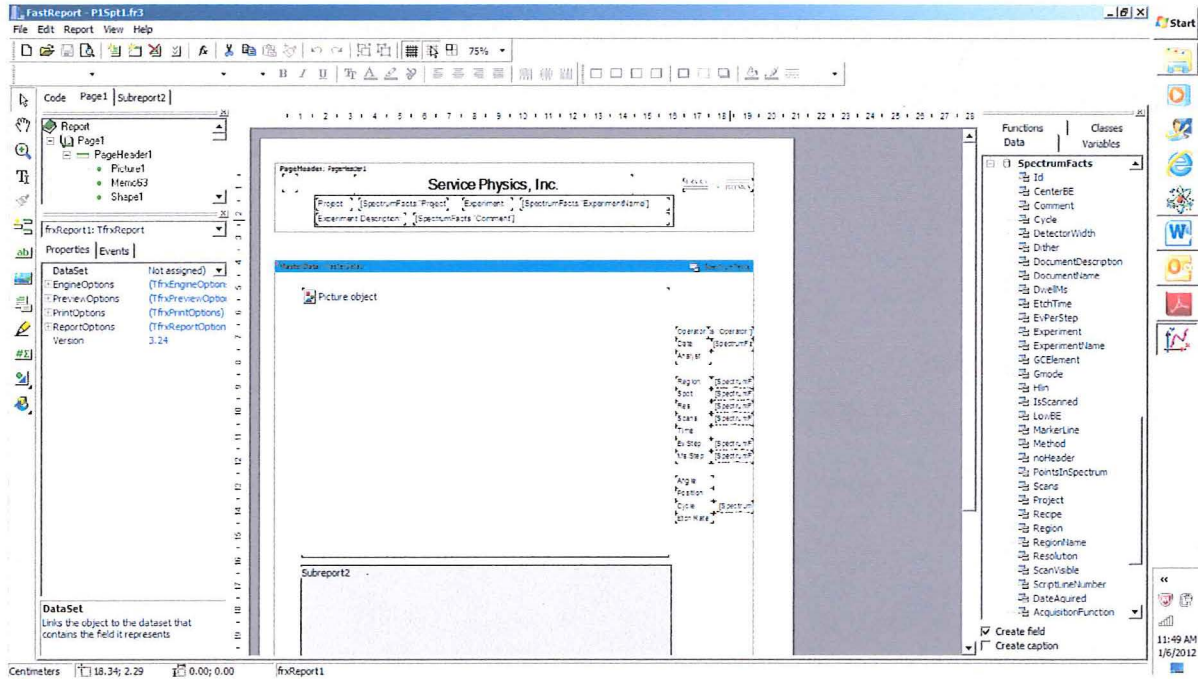
Select one of the 7 template icons then click the “Save and Close” Button to activate a template.

Then you can preview the FR

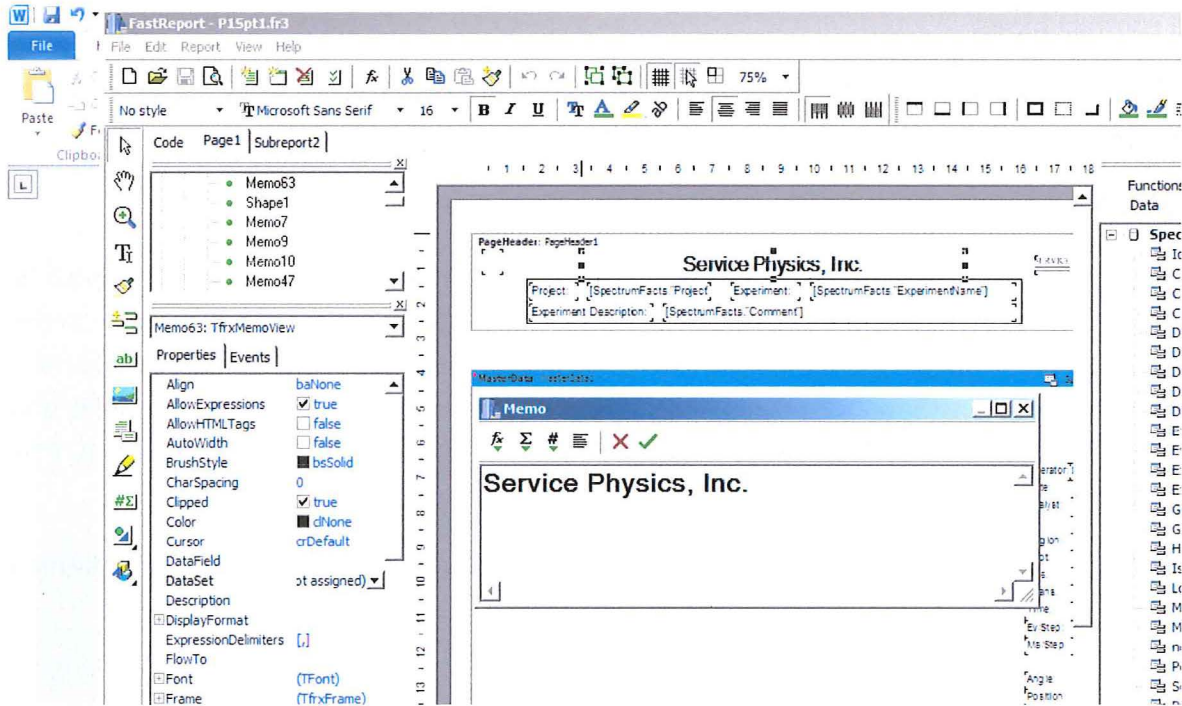


You will want to modify the Header to enter your own Name and Icon if available.

Close the preview and open the "Design Template" Tool. This will open the active Template in design mode.

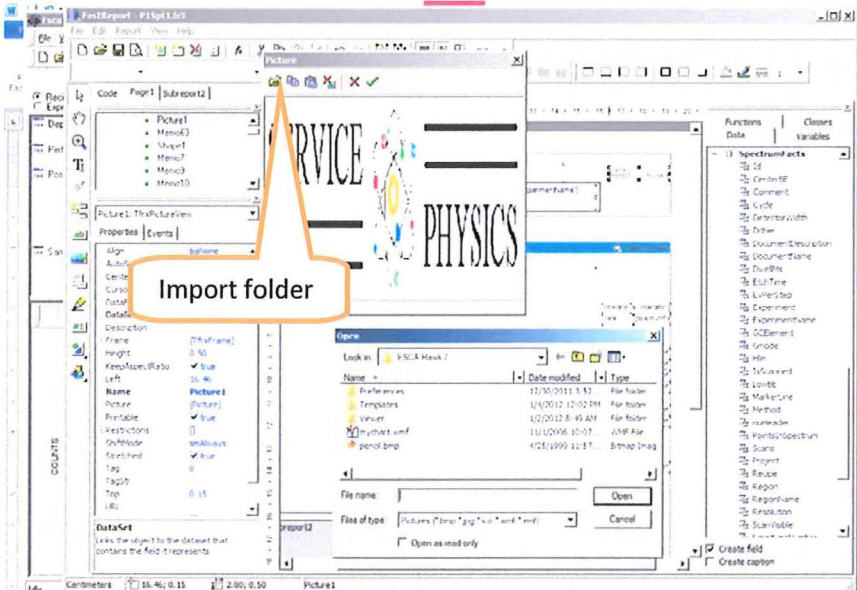


Double click on the “Service Physics Inc.” text block. You can see the corner symbols that define the size of the block. Memo Box will open. Modify the text in the box and click the green check mark to save the new text.



To change the Icon, double click the Service Physics Icon, Open the import folder, find your icon, open your icon in the Picture Dialog and then click the green check to save the change.

If you wish to delete the Icon then just select the red x next to the green check.



You will notice that this designer has a list of many of the variables used in the ESCA Hawk program. These can be dragged onto the template to expose the value of that variable at the time you add the region to the FR. The manual has additional information about designing templates and a complete manual from FR is available. We can also provide custom templates on a contract bases.

The printout is compatible with any Windows Compatible printer, PDF converters and Print to file servers.

Building Report using sharing of data with Windows Office

The Windows Clipboard provides powerful data sharing. Tables and Graphics can be copied to the clipboard and pasted into EXCEL, Work or Power Point. Clipboard Icons are available in the tool bars of the Graphic Viewer (Spectrum Display) and the Data Table. These provide the ability to transfer anything from a single number or spectra to complete working tables and graphics that can be modified. In addition the information in the FR can be saved in HTML, PDF or EXCEL formats. The FR icons are found in the Report Preview toolbar.

There are also icons that provide for the saving of tables and graphics as jpeg or bitmap formats.

EXPORT

Export of raw data is available in EXCEL, VAMAS and txt formats. The Export utility is provided in both the Capture and Analysis program. In addition the DP Viewer provides for transfer of Composition tables and Binding Energy Tables for multiple data sets taken with one MRS table. The plots of various parameters verses Time (aging), distance (Depth Profile), Position (process tracking on multiple samples or Line Scans) can be constructed in EXCEL using data prepared by peak fitting or area analysis tools in the DP viewer.

EXCEL Export

From the File menu select Export

Fill out the Institution and instrument model number information

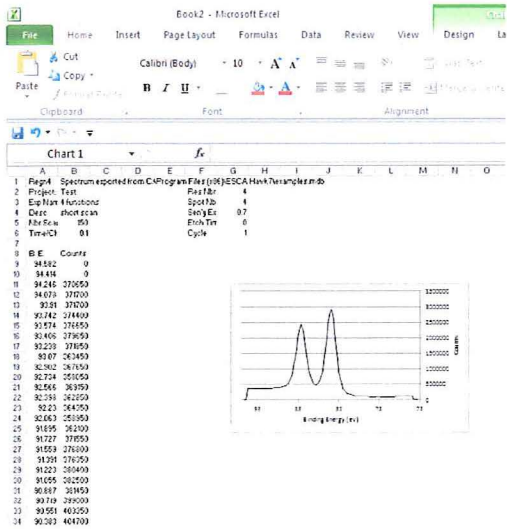
Configure the export conditions

All regions in list may be exported

Regions with the visible box checked will be exported.

Export to EXCEL

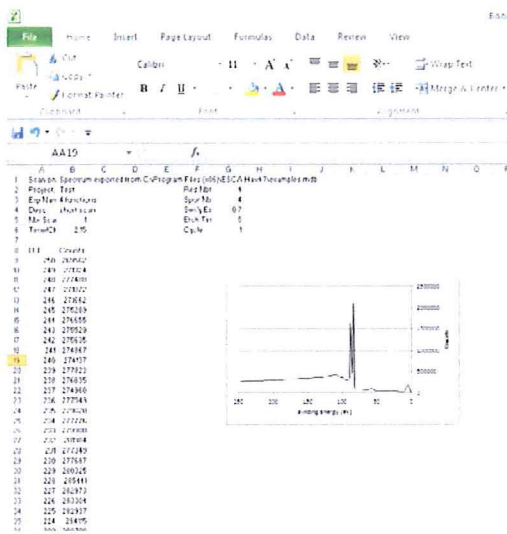
Scan	Visible	XOffset	YOffset	YScale
Scan on disk spot	<input checked="" type="checkbox"/>	0	0	1
Regn2	<input type="checkbox"/>	0	0	1
Regn3	<input type="checkbox"/>	0	0	1
Regn4	<input checked="" type="checkbox"/>	0	0	1



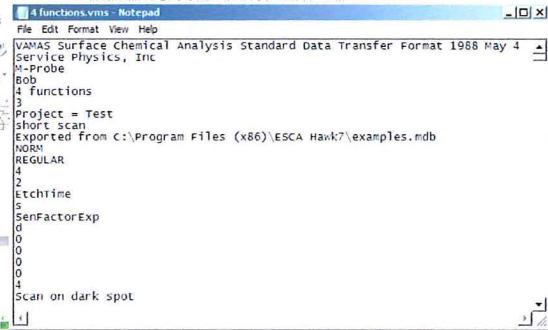
Data and spectrum are provided one per page.

Header provides basic information about data.

Columns for BE and counts.



Data in standard VAMAS format.



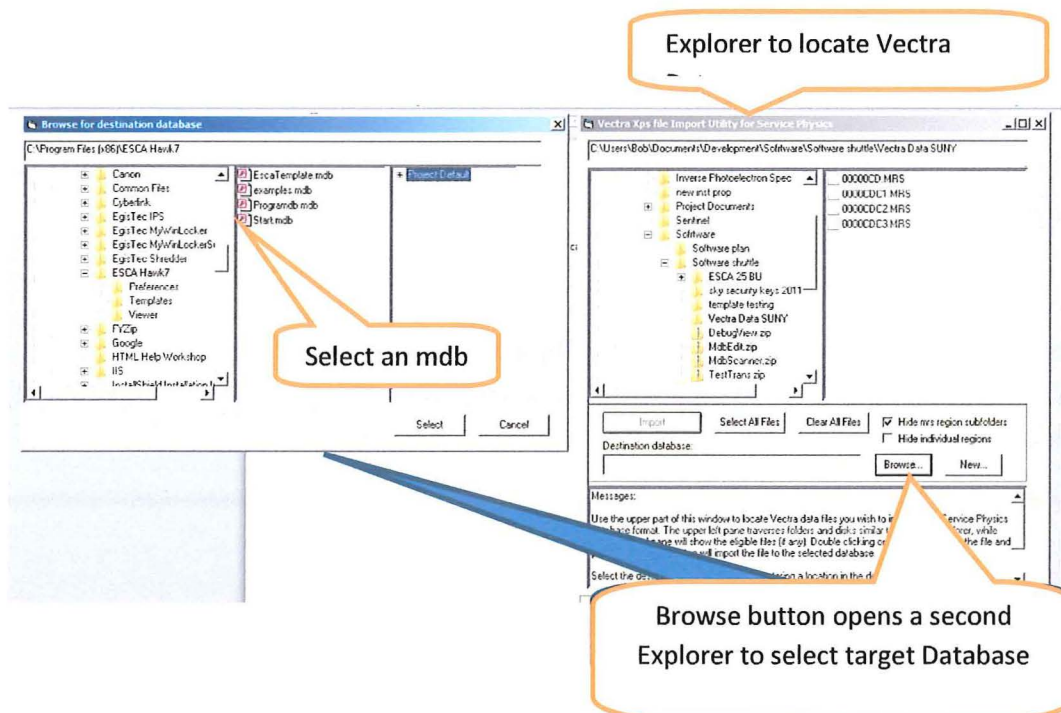
```
4 functions.vms - Notepad
File Edit Format View Help
VAMAS Surface Chemical Analysis Standard Data Transfer Format 1988 May 4
Service Physics, Inc
M-Probe
Bob
4 functions
3
Project = Test
short scan
Exported from c:\Program Files (x86)\ESCA Hawk7\examples.mdb
NORM
REGULAR
4
2
EtchTime
5
SenFactorExp
0
0
0
4
Scan on dark spot
```

Vamas is an international standard for electron spectroscopy. This allows direct import into generally available Data Analysis programs.

Data string only in txt format. Used in our Demo software to provide simulated operation. The text format is called fakedata. It is a single column of counts. A header provides the BE span and the number of data points.

Import Vectra DOS

The Vectra Data Import utility is a standalone application that can be opened from the Windows start menu.



To Import a Vectra file

1. Find the folder that contains the MRS or REG files. There will be no entries in the Right panel of the Vectra Data Explorer until MRS or REG files are discovered.
2. If you have folders with single REG files you can blank these folders from being displayed. This is the default. Notice the check box is checked.
3. The default setting will display both the MRS name and the REG files. You can blank the display of the REG files that are members of the MRS file by checking the "Hide Individual regions".

4. You can select a MRS or REG file for processing by clicking on the name (not the check box). If you want to select more than one hold down the CTRL key on the keyboard and select multiple files. You can select all files by clicking the "Select all Files" button.
5. You must establish a target Database for the "Import" button to activate.
6. If you select the Browse button the left hand explorer will open. Any database will accept the import.
7. Click the Import button. The files will receive check marks as they are processed. This way you are left with a record of the imported files.
8. If you have a target Database defined you will see the path to the database in the display window next to the Browse button.
9. A quick method of importing a few files is to just double click the file name. The file will be imported and the check box will be checked.
10. Once the files are imported into a data base you will find the files listed in the Experiment Tree of the Analysis Application. If the Analysis Application was open during the import process you will need to use the Refresh Button, next to the Load Data button, to update the list.
11. All functions of the Analysis program can now be performed. If you had performed data reduction on the Vectra data this information should be present in the Experiment tree as an entry just below the Raw Data entry.

Life is short – Call if you have questions! 541-318-8688

